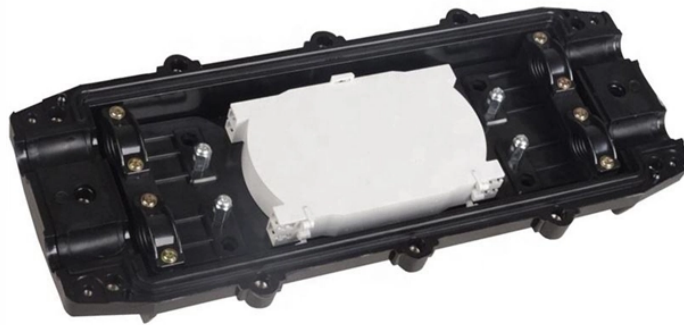


# **Ground wire of finished distribution box**



## Ground wire of finished distribution box



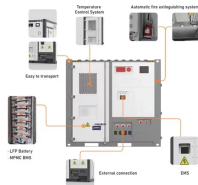
Section 250.119 (A) describes how wire-type equipment grounding conductors must be identified. Equipment grounding conductors can be bare, covered or insulated.



Generally, copper core wire is selected as the ground wire and connected to the PE wiring bar. When connecting, it is necessary to strip the wire for a distance, then connect it to the ...



How to make proper & safe electrical ground wiring connections in the box: This article describes options for connecting a metal electrical box to the grounding conductor & connecting the ...



Install a #4 copper parallel ground wire inside the conduit from the equipment cabinet to the junction box or pull box. Connect the #4 copper ground wire to the equipment cabinet, junction box, and parallel ...



Section 250.119 (A) describes how wire-type equipment grounding conductors must be identified. Equipment grounding conductors can be bare, covered or insulated.



Connect one end of the insulated copper wire to the grounding grid and lead the other end into the distribution box and connect it to the ground bus bar of the distribution box.



Generally, copper core wire is selected as the ground wire and connected to the PE wiring bar. When connecting, it is necessary to strip the wire ...



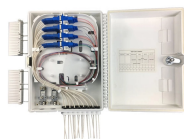
Each Power Circuit Breaker or Power Transformer having a bushing Voltage Transformer on the tank shall have the Voltage Transformer provided with a separate ground lead, independent of the ...



Each DISTRIBUTION BOX and controller must be grounded. On the US market, a 5.26 mm<sup>2</sup> (10 AWG) ground wire must be used, and in all other markets a 6 mm<sup>2</sup> must be used.



Choose from our selection of grounding blocks, including over 750 products in a wide range of styles and sizes. Same and Next Day Delivery.



Everything looks perfect until the moment of truth arrives. That's why today we'll break down the life-or-death details of grounding distribution boxes and cable shielding layers using plain ...



Ground wires guide the charge generated by these minor or major surges and protect against the risk of electrical shock and fire. We offer ground wires with a variety of maximum amperages and voltages ...

## Contact Us

For more information, pricing, or custom data center solutions, please contact us:

Website: <https://yoahorroenergia.es>

Email: [hello@yoahorroenergia.es](mailto:hello@yoahorroenergia.es)

Phone: +233 54 318 7269

Address: Plot 28, Spintex Road, Accra, Greater Accra, Ghana

This document is for informational purposes only. Specifications subject to change without notice.

