

Gulf Region Four-Port Information Panel Low Noise



Gulf Region Four-Port Information Panel Low Noise



When enabled, Silence Supression will detect silence on the line, and will stop transmission and implement comfort noise when this occurs. This conserves network resources.



The fixed-port (FXS and FXO) modules in the voice gateway provide Dual-Tone Multifrequency (DTMF) detection, voice compression and ...



After connecting the LNF-PS4 (see section 7) the instrument can be switched with the Main switch on the front panel (see Figure 4) it shall lit indicating proper DC supply and that unit is on.



Choose a region on the map to access your local water levels, tide and current predictions, and other oceanographic and meteorological conditions, or search below.



Noise Map uses flight location and position historical data to estimate flight noise in your area. The noise is visualised in an easy-to-use dashboard and App.



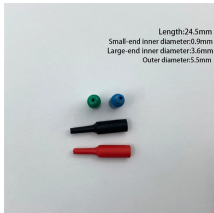
A gulf is defined as a large inlet of the sea or ocean, typically characterized by being partially enclosed by land. These bodies of water are generally larger and more deeply indented than ...



Gulfs, unique marine environments stretching into landmasses, are distinctive features on the Earth's surface. These water bodies are typically enclosed by land on three sides with an opening such as a ...



Gulf Dynamic Switchgear is a fully type tested LV switchgear Panel approved by all the local and regional authorities, utilities and approved by most of the local, regional developers, consultants & ...



Length:24.5mm
Small-end inner diameter:0.9mm
Large-end inner diameter:3.6mm
Outer diameter:5.5mm

Written information concerning availability and character of service for any desired location will be supplied by FPL. FPL will not be responsible for mistakes resulting from information given orally.



- = No Data Reported; -- = Not Applicable; NA = Not Available; W = Withheld to avoid disclosure of individual company data.



GULF definition: 1. a very large area of sea surrounded on three sides by a coast: 2. the Persian Gulf and the.... Learn more.



The National Transportation Noise Map and associated data were developed for national level analysis and includes simplified noise modeling. It is intended for the tracking of trends and should not be ...



9 meanings: 1. a large deep bay 2. a deep chasm 3. something that divides or separates, such as a lack of understanding 4..... Click for more definitions.



United States Coast Guard U.S. Department of Homeland Security



A gulf, in geographical terms, represents a significant embayment of an ocean or sea, partially enclosed by land. More than a simple inlet, it's a geomorphological feature shaped by ...



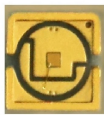
It is bounded on the northeast, north, and northwest by the Gulf Coast of the United States; on the southwest and south by the Mexican states of Tamaulipas, Veracruz, Tabasco, Campeche, Yucatán, ...



The meaning of GULF is a part of an ocean or sea extending into the land. How to use gulf in a sentence.



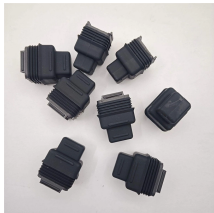
The ITC-404SP offers the same Enhanced Noise Reduction ...



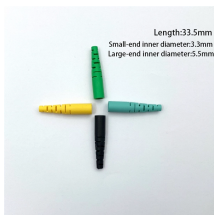
The Gulf nations countries are a group of six-member countries, comprise Bahrain, Kuwait, Oman, Qatar, Saudi Arabia, and the United Arab Emirates.



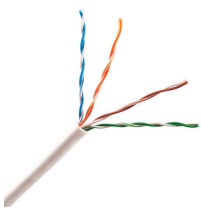
digital serial communication. RDM Remote Device Management (ANSI E1.20) is a protocol enhancement to DMX512 that allows low-speed bidirectional communication between a system ...



These award-winning premium cooling panels are quiet and effective. Ideal for cooling smaller systems in visible locations such as living spaces and AV studios. A unique feature of the system provides ...



Low insertion loss Low VSWR Indoor applications Manual switching with U-link DPDT interlocks for customer's RF interlocking Notes 1) For more than 5,000 feet (1,524 m), please contact the factory. ...



Gulf, any large coastal indentation. More specifically, such a feature is the reentrant of an ocean, regardless of size, depth, configuration, and geologic structure.

Contact Us

For more information, pricing, or custom data center solutions, please contact us:

Website: <https://yoahorroenergia.es>

Email: hello@yoahorroenergia.es

Phone: +233 54 318 7269

Address: Plot 28, Spintex Road, Accra, Greater Accra, Ghana

This document is for informational purposes only. Specifications subject to change without notice.

