

# How far apart are the pole and the junction box



## Overview

At light standards, there is a segment from the junction box to the pole base, and a second segment from the base to the actual luminaire. As. When installing insulated conductors of 4 AWG or larger, the minimum dimensions of pull or junction boxes installed in a raceway or cable run must comply with 314. Whether it's a home, office, or industrial site, NEC compliance is legally required in most states. One critical area is junction boxes, which protect electrical. The National Electrical Code (NEC) governs electrical junction box rules. This guide breaks down the actual rules inspectors check — with calculations and. NEC 314. 28: Requires junction boxes to be made of non-combustible materials like stainless steel, aluminum, or UV-resistant plastic. 26: Mandates a minimum. Fixture Options & Mounting: Common pole-mounted fixtures include shoebox and cobra head styles, with mounting heights typically ranging from 15–20 feet for smaller lots and 20–30+ feet for larger commercial areas.

## How far apart are the pole and the junction box



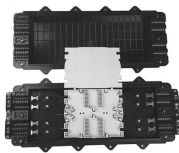
Learn key electrical code requirements for junction boxes, including sizing, grounding, materials, and clearance to ensure safety and efficiency. Electrical safety is non-negotiable, and the ...



Learn NEC electrical junction box rules with box fill calculations, accessibility guidelines, grounding requirements, and inspection essentials.



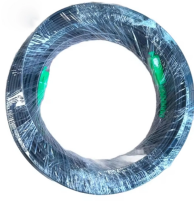
Learn what the NEC requires for junction boxes, from box fill calculations and grounding to outdoor use and fire-rated wall installations.



One key point is that on straight pulls the box or conduit body length must be at least eight times the trade size of the raceway. For angle pulls, U pulls, and splices, the distance between each raceway ...



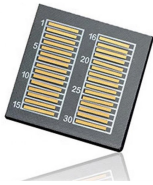
For angle pulls, U pulls or splices, the distance between each raceway entry inside the box or conduit body and the opposite wall of the box or conduit body shall not ...



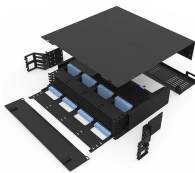
For angle pulls, U pulls or splices, the distance between each raceway entry inside the box or conduit body and the opposite wall of the box or conduit body shall not be less than six times the trade size ...



Explore the comprehensive guide on light pole spacing and coverage for roadways and parking lots. Understand NEMA pattern types, spacing guidelines, and optimal illumination for safety.



Learn how to size pull boxes and junction boxes using NEC 314.28 and NEC 314.16. Includes straight-pull, angle-pull, U-pull, and splice-box examples with real dimensions.



Learn NEC electrical junction box rules with box fill calculations, accessibility guidelines, grounding requirements, and inspection essentials.



At light standards, there is a segment from the junction box to the pole base, and a second segment from the base to the actual luminaire. As with other conduit runs, the circuit segment length of the ...



Section 314.16 specifies the minimum volume size of junction boxes required for various types of electrical conductors. The volume size of a junction box is measured in cubic inches. It is ...



Taking the mystery out of sizing pull boxes and junction boxes. Pull boxes, junction boxes, and conduit bodies must be sized to allow conductors 4 AWG and larger to be installed without damage to the ...

## Contact Us

For more information, pricing, or custom data center solutions, please contact us:

Website: <https://yoahorroenergia.es>

Email: [hello@yoahorroenergia.es](mailto:hello@yoahorroenergia.es)

Phone: +233 54 318 7269

Address: Plot 28, Spintex Road, Accra, Greater Accra, Ghana

This document is for informational purposes only. Specifications subject to change without notice.

