

## How long after installation can a mobile fiber distribution box be used



### Overview

The fiber cable may be buried before, after or day of your installation. This is called the fiber "drop." A fiber optic distribution box, also known as a fiber optic terminal box or fiber optic termination box, is a device used to connect and manage fiber optic cables in a network. They also feature resistance to moisture, impact, chemical exposure. Even within communications applications, we have applications that differ widely in usage and in methods of installation. We have "outside plant" fiber optics as used in telephone networks, CATV, metropolitan networks, utilities, etc.



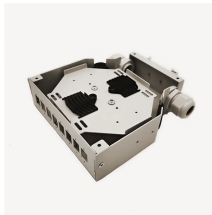
## How long after installation can a mobile fiber distribution box be used



Is the fiber cable run to my house on the same day as my installation appointment? The fiber cable may be buried before, after or day of your installation. If buried before, it's typically 2-4 days prior to your ...



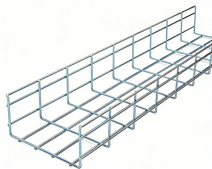
A compact and easy-to-open terminal box reduces installation time and minimizes the risk of fiber micro-bending. For operators deploying thousands ...



A compact and easy-to-open terminal box reduces installation time and minimizes the risk of fiber micro-bending. For operators deploying thousands of units per month, good user-side ...



A Fiber Distribution Box (FDB) is a component used in fiber optic networks for power distribution and terminal connections. It serves as a junction point where optical signals are ...



Learn what to expect during community-wide fiber network installation in mobile home communities, from assessment to completion and resident activation.



Using fiber distribution boxes correctly not only prevents signal loss and downtime, but also ensures network longevity and capability for future expansion.



It should be dust-proof, watertight and has a strong resistance to corrosive elements for long-term outdoor deployments. And the housing must be easy to open and install with a lock to ...



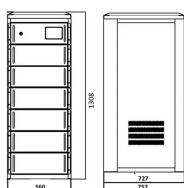
Thus, a fiber termination box is used to terminate the optical fiber cables in the field and connect them to the pigtail by splicing. After an optical cable arrives at the user's end, it is fixed in the ...



By understanding the types, installation steps, and maintenance practices, beginners can embark on the journey of building and sustaining reliable fiber optic networks with confidence.



Inspect all installation workmanship during the installation itself so any problems can be identified and solved before they become major issues. Daily supervisors and installers should review processes, ...



How do I install a fiber optic distribution box? The installation process involves preparing the installation site, mounting the distribution box securely, connecting the fibers, and testing the ...

Types of Fiber Optic Cables What Is A Fiber Termination Box? Fiber Termination Box Installation Procedure Maintenance of Fiber Termination Box In network cabling, outdoor connections generally use fiber optic cables. When these optical fibers are installed or laid out, a Fiber Termination Box, or FTB, is used to distribute and protect the optical fiber links in FTTH networks. The fiber termination box is an interface between the fiber cable from the line side and the pigtailed to be passed t... See more on stl.tech.rcimgcol .cico { background: #f5f5f5; } .b\_drk .rcimgcol .cico, .b\_dark .rcimgcol .cico { background: unset; } .b\_imgSet .b\_hList li.square\_m, .b\_imgSet .b\_hList li.tall\_m { width: 75px; } .b\_imgSet .b\_hList li.tall\_mlb { width: 113px; } .b\_imgSet .b\_hList li.tall\_mln { width: 96px; } .b\_imgSet .b\_hList li.wide\_m { width: 128px; } .b\_imgSet .b\_Card .b\_hList li { padding-left: 1px; padding-right: 9px; } .b\_imgSet .b\_Card .b\_hList li.tall\_wfn { width: 80px; padding-right: 6px; } .b\_imgSet .b\_Card .b\_hList li:last-child { padding-right: 1px; } .b\_imgSet .b\_Card .b\_imgSetData { padding: 0 8px 8px; height: 40px; } .b\_imgSet .b\_Card .b\_imgSetItem { box-shadow: 0 0 0 1px rgba(0,0,0,.05), 0 2px 3px 0 rgba(0,0,0,.1); border-radius: 6px; overflow: hidden; } .b\_imgSet .b\_imgSetData p a { color: #444; outline-offset: 0; } .b\_subModule .b\_clearfix .b\_mhdr .b\_floatR .b\_moreLink, .b\_subModule .b\_clearfix .b\_mhdr .b\_floatR .b\_moreLink:visited, .b\_subModule > .b\_moreLink, .b\_subModule > .b\_moreLink:visited { color: #767676; } .b\_imgSet .cico .b\_placeholder { display: flex; justify-content: center; background-color: #f5f5f5; background-clip: content-box; } .b\_imgSet .cico .b\_placeholder a { display: flex; } .b\_imgSet .cico .b\_placeholder a img { width: 48px; height: 48px; margin: auto; } @media (max-width: 1362.9px) { #b\_context .b\_entityTP .b\_imgSet li:nth-child(5) { display: none; } .b\_imgSet .b\_hList li.wide\_m:nth-child(3) { display: none; } } @media (max-width: 1274.9px) { #b\_context .b\_entityTP .b\_imgSet li:nth-child(4) { display: none; } .b\_imgSet .b\_hList li.wide\_m:nth-child(2) { display: none; } } .rcimgcol .b\_imgSet { content-visibility: auto; contain-intrinsic-size: 1px 124px; } .rcimgcol { height: 108px; padding-top: var(--smtc-gap-between-content-x-small); padding-bottom: var(--smtc-gap-between-content-x-small); } .b\_algo:has(.b\_agh) .rcimgcol { padding-top: var(--smtc-gap-between-content-xx-small); } .rcimgcol .b\_imgSet { overflow: hidden; } .rcimgcol .b\_imgSet ul { overflow-x: auto; overflow-y: hidden; white-space: nowrap; padding-left: 0; } .rcimgcol .b\_imgSet ul::-webkit-scrollbar { -webkit-appearance: none; } .rcimgcol .b\_imgSet .b\_hList > li { padding-right: var(--smtc-padding-ctrl-text-side); } .rcimgcol .b\_imgSet .cico { border-radius: unset; } .rcimgcol .b\_imgSet .b\_hList > li:first-child .cico, .rcimgcol .b\_imgSet .b\_hList > li:first-child .cico a { border-radius: unset; border-top-left-radius: var(--mai-smtc-corner-card-default); border-bottom-left-radius: var(--mai-smtc-corner-card-default); overflow: hidden; } .rcimgcol .b\_imgSet .b\_hList > li:last-child .cico, .rcimgcol .b\_imgSet .b\_hList > li:last-child .cico a { border-radius: unset; border-top-right-radius: var(--mai-smtc-corner-card-default); border-bottom-right-radius: var(--mai-smtc-corner-card-default); overflow: hidden; } .rcimgcol .rcimgcol .b\_sideBleed { margin-left: unset; margin-right: unset; } .rcimgcol .b\_imgclgovr { cursor: pointer; } .rcimgcol .b\_imgclgovr .cico img: hover { transform: scale(1.05); transition: transform .5s ease; } #b\_content #b\_results > .b\_algo .b\_caption:has(.rcimgcol) { padding-right: var(--mai-smtc-padding-card-default); margin-right: calc(-1 \* var(--mai-smtc-padding-card-default)); margin-left: calc(-1 \* var(--mai-smtc-padding-card-default)); padding-left: var(--mai-smtc-padding-card-default); } .rcimgcol .b\_imgSet .b\_hList .cico a { display: flex; outline-offset: -2px; } sightsOverlay, #OverlayIFrame .b\_mcOverlay sightsOverlay { position: fixed

```
;top:5%;left:5%;bottom:5%;right:5%;width:90%;height:90%;border:0;border-radius:15px;margin:0;padding:0;overflow:hidden;z-index:9;display:none}#OverlayMask,#OverlayMask.b_mcOverlay{z-index:8;background-color:#000;opacity:.6;position:fixed;top:0;left:0;width:100%;height:100%}.rcimgcol .b_hList>li{position:relative;padding-bottom:0}.rcimgcol .b_hList>li .iacf_smol{pointer-events:none;border-top-right-radius:var(--mai-smtc-corner-card-default);border-bottom-right-radius:var(--mai-smtc-corner-card-default);white-space:normal}.rcimgcol .b_hList .cico{margin-bottom:0}.iacf_smol{display:flex;justify-content:center;align-items:center;gap:var(--smtc-gap-between-content-xx-small);width:100%;height:100%;background:rgba(0,0,0,.6);position:absolute;left:0;top:0;color:var(--mai-smtc-foreground-ctrl-on-image-rest);font:var(--bing-smtc-text-global-body2-strong);flex-wrap:wrap;align-content:center;text-align:center}.iacf_smol:hover{text-decoration:underline}.iacfmit[data-nohov] .iacfimgc .cico img{transform:none}The Fiber Optic Association
```

## Contact Us

For more information, pricing, or custom data center solutions, please contact us:

Website: <https://yoahorroenergia.es>

Email: [hello@yoahorroenergia.es](mailto:hello@yoahorroenergia.es)

Phone: +233 54 318 7269

Address: Plot 28, Spintex Road, Accra, Greater Accra, Ghana

This document is for informational purposes only. Specifications subject to change without notice.

