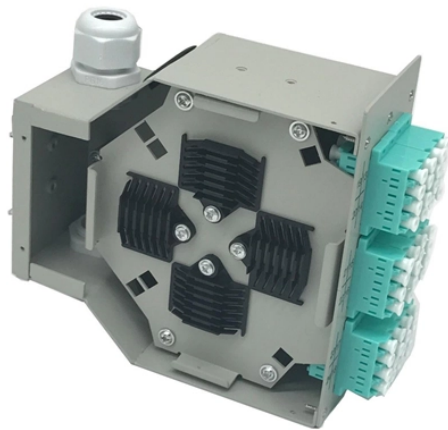


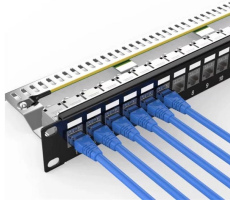
How long of wire needs to be cut for a cold-joint



Overview

As a rule of thumb, we recommend that the time gap between the two batches does not exceed 30 minutes. Technically speaking, other factors can influence this time horizon, such as local temperature, type of cement used, concrete mix, etc. This can be caused by a stoppage, delay, or low rate of pour placement. In some. Understanding what a cold joint is and why it needs repairing is crucial. Failure to address a cold joint can lead to. If the slab contains wire mesh, cut out alternate wires, or preferably discontinue the mesh, across contraction joints. Use polymer-modified mortar or epoxy slurry for next-day bond depending on ambient. Review all applicable local, state, and federal codes.

How long of wire needs to be cut for a cold-joint



If you don't have enough development above the cold joint to handle whatever tension you have, you may need to have them cut the bars off a few inches above the cold joint, install ...



It's still important to pour the second batch as soon as possible; otherwise it may be too late to stop a cold joint, even if you use a vibrator. How do you know when it's too late? Simply, if the concrete ...



Learn how to prep and bond a next-day concrete pour to repair a cold joint. This guide walks through practical surface prep, bonding methods, and timing so you ...



These joints are typically not as deep as those obtained by the conventional saw-cut process, but should be a minimum of 1 inch [25 mm] in depth. Conventional saw-cut joints should be ...



If you do have to purge a length of wire or cable, always test it before you energize it. At a minimum, conduct an insulation resistance test with a megohm-meter.



Learn how to repair cold joints in concrete to ensure the structural integrity of your project. Discover the right techniques and materials for a strong, lasting fix.



Stay updated with the latest news and stories from around the world on Google News.



Learn how to prep and bond a next-day concrete pour to repair a cold joint. This guide walks through practical surface prep, bonding methods, and timing so you can create a strong, durable joint. You'll ...



In most systems, the wires, cables, or mats are laid over a bottom course of unhardened concrete, and the top course is placed immediately over this assemblage with little lapse of time to avoid the ...



This guide, developed with input from construction experts, provides step-by-step instructions and important tips for repairing cold joints effectively. Understanding what a cold joint is and why it needs ...



As a rule of thumb, we recommend that the time gap between the two batches does not exceed 30 minutes. Technically speaking, other factors can influence this time horizon, such as local ...

Contact Us

For more information, pricing, or custom data center solutions, please contact us:

Website: <https://yoahorroenergia.es>

Email: hello@yoahorroenergia.es

Phone: +233 54 318 7269

Address: Plot 28, Spintex Road, Accra, Greater Accra, Ghana

This document is for informational purposes only. Specifications subject to change without notice.

