

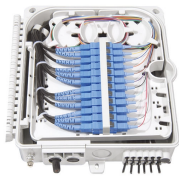
How many single-fiber optical modules should be connected



How many single-fiber optical modules should be connected



Single-mode optical modules are best for long distances and fast speeds. They use a thin fiber core. Multi-mode modules are good for short ...



Learn all about fiber optic cable distance and the key factors that affect it. Find out how to select the appropriate cables for your network and compare single-mode and multimode options.



Single-mode optical modules are best for long distances and fast speeds. They use a thin fiber core. Multi-mode modules are good for short distances. They cost less and are easier to set up. ...



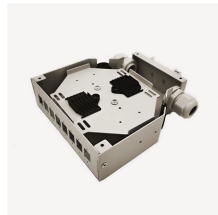
Deploying optical modules requires the right fiber patch cable. It directly affects network connection stability, performance, and maintenance. This article will explain how to pick the right fiber ...



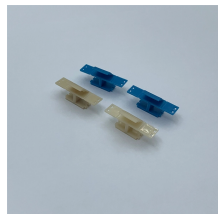
Confused by LC, SC, MPO, UPC, and APC? This complete fiber optic patch cable guide covers connector types, single-mode vs multimode, insertion loss specs, and how to choose the right ...



Comprehensive guide on BiDi Optical modules, detailing single-fiber bidirectional connectivity, deployment tips, troubleshooting, and multi-speed applications for optimized networks.



Generally speaking, the number of optical cores in an optical fiber is the total number of equipment interfaces multiplied by 2, plus 10% to 20% of the spare quantity.



Complete guide to choosing fiber cables and SFP modules for UniFi networks. Single-mode vs multimode, DAC cables, 10G/25G modules, and deployment scenarios.



☐☐ The fiber type and transceiver type must match. An SR module connected to single-mode fiber may create performance problems. An LR module connected to multimode fiber may fail ...



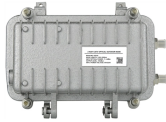
One of the questions many people ask is whether single-mode fiber can transmit and receive data simultaneously. In this article, let's explore the ...



- Combining multiple cables, such as a 24-fiber and a 48-fiber cable, instead of using a single 72-fiber cable, can provide quicker access to products and potentially easier installation, depending on cable ...



Comprehensive guide on BiDi Optical modules, detailing single-fiber bidirectional connectivity, deployment tips, troubleshooting, and multi-speed ...



Learn how to choose the right fiber count for data centers, campuses, FTTH and backbone projects. Practical rules, sizing tips, and future-proof planning.

Contact Us

For more information, pricing, or custom data center solutions, please contact us:

Website: <https://yoahorroenergia.es>

Email: hello@yoahorroenergia.es

Phone: +233 54 318 7269

Address: Plot 28, Spintex Road, Accra, Greater Accra, Ghana

This document is for informational purposes only. Specifications subject to change without notice.

