

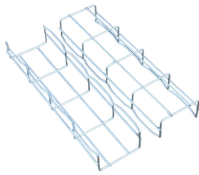
# **How to branch the wires in the distribution box**



## How to branch the wires in the distribution box



Correct wiring methods for circuit breakers within distribution boxes are fundamental to ensuring electrical safety and compliance with established codes. The distinction between 1P and 2P ...



Wiring arrangement: Arrange the wires neatly in the box, fix them with zip ties, avoid wires from tangling or coming into contact with sharp edges, and reserve a certain amount of space ...



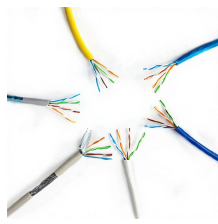
Correct wiring methods for circuit breakers within distribution boxes are fundamental to ensuring electrical safety and compliance with established codes. ...



Master the safest and most efficient circuit breaker wiring configurations. Learn about single-phase vs. three-phase setups, safety standards, and future-proof electrical ...



The article discusses the wiring of typical 120-V branch circuits, focusing on receptacle outlets, switch outlets, and light outlets. It covers essential safety features, grounding requirements, and the ...



Master the safest and most efficient circuit breaker wiring configurations. Learn about single-phase vs. three-phase setups, safety standards, and future-proof electrical planning.



In this video, we'll walk you through the essentials of wiring your home for electricity, ensuring you understand every step of the process.



Find out how to properly wire an electrical panel box with a comprehensive diagram and step-by-step instructions.



After completing the wiring, fix the outer coating of wires securely with wire clamps. The wire clamp on indoor unit side is furnished. Follow the procedure below to install. Refer to the circuit diagram on the ...



Wiring Direction: Wiring between the main circuit breaker and each branch circuit breaker in the box generally goes on the left, and the wiring out of the distribution box generally goes on the ...



Understand the comprehensive process of installing a residential breaker box, ensuring safe power distribution and code compliance.



Once this is identified, the wiring diagram should be drawn up, showing the main power line coming from the utility source and then branching off to the various branch circuits. This diagram ...

## Contact Us

For more information, pricing, or custom data center solutions, please contact us:

Website: <https://yoahorroenergia.es>

Email: [hello@yoahorroenergia.es](mailto:hello@yoahorroenergia.es)

Phone: +233 54 318 7269

Address: Plot 28, Spintex Road, Accra, Greater Accra, Ghana

This document is for informational purposes only. Specifications subject to change without notice.

