

# How to connect a pigtail to a mirror



## Overview

If you are thinking of adding one, you may be wondering how to wire and connect a lighted mirror safely. Fear not, for we have your back with this step-by-step guide. Pigtails play a crucial role in ensuring safe and efficient connections within electrical systems, especially when dealing with multiple wires or limited space. A pigtail is composed of three strands of wire. The MirrorTap Power Cord simply plugs into the exposed wire harness on the rear face of your auto-dimming mirror. The MirrorTap is constructed of 26 gauge wire with a 2 amp inline fuse and a black braided flexible sleeve. Don't let the process intimidate you—this guide will walk you through each step safely, ensuring a seamless. A pigtail connector is a short length of insulated electrical wire that is pre-attached to a device, terminal, or fixture, serving as a flexible bridge between the fixed wiring system and the component.

## How to connect a pigtail to a mirror



Loop the bare wire at one end of the pigtail around the device's screw terminal in a clockwise direction using needle-nose pliers. Tighten the screw terminal down to secure the wire ...



A pigtail electrical wire connector is a simple DIY project, whether you need to extend a short wire or connect neutral, hot, and ground wires to a circuit.



Learn how to hardwire LED mirror safely with this step-by-step article. Discover the method, cord, plug, and connection tips your bathroom design needs.



Loop the bare wire at one end of the pigtail around the device's ...



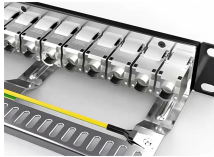
Knowing how to make an electric pigtail is essential for car wiring projects. You might encounter damaged wire sections or short wires that need extensions to create electrical continuity...



Step-by-step LED bathroom mirror installation guide covering layout, wall mounting, wiring, and testing. Ideal for DIYers and pros installing hardwired LED mirrors.



In this article, we take you through the steps for wiring and connecting a lighted mirror in your bathroom while ensuring that you safely enjoy its full functionality.



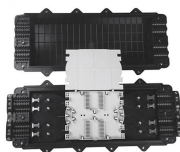
Learn what a pigtail is in electrical wiring, why it's essential for safety, and how to make secure pigtail connections step by step.



A pigtail electrical wire connector is a simple DIY project, whether ...



A complete guide to safely installing electrical pigtail connectors. Learn proper selection, preparation, and secure wiring techniques.



The installation process usually involves tapping into the mirror's power source, and MirrorTap provides instructions and accessories for a straightforward setup.



NEW 7 Pin / 5 Wire 16" Pigtail For Gentex & Donnelly Auto Dim / Compass Auto Dim / Auto Dim Maplight / Auto Dim Compass Maplight / Auto Dim Compass Temp Rear View Mirrors

## Contact Us

For more information, pricing, or custom data center solutions, please contact us:

Website: <https://yoahorroenergia.es>

Email: [hello@yoahorroenergia.es](mailto:hello@yoahorroenergia.es)

Phone: +233 54 318 7269

Address: Plot 28, Spintex Road, Accra, Greater Accra, Ghana

This document is for informational purposes only. Specifications subject to change without notice.

