

How to connect a power supply to a standard electrical distribution box



Overview

In this video, we'll walk you through the process of wiring a home distribution box with a detailed connection diagram. It serves as a central hub for distributing electricity throughout a building, ensuring that power is delivered safely and efficiently to all the required locations. In this step by step tutorial, we will show how to wire a single Phase Consumer Unit Installation in home from Utility Pole to a Single-Phase Energy Meter & Single-Phase Distribution board and then How to connect Single Phase Loads in single Phase Wiring Distribution System in home electric supply. The electrical service panel, often called a breaker box, acts as the central distribution point for all electricity entering a home. Its function is to safely divide the incoming high-amperage utility power into smaller, manageable branch circuits that supply power to lights, outlets, and.

How to connect a power supply to a standard electrical distribution



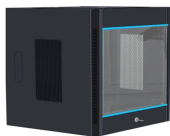
To Wire and install a single phase consumer unit for electric supply distribution in multi sections of a house, follow the steps given below: Connect the Incoming Live and Neutral (L and N) wires from the ...



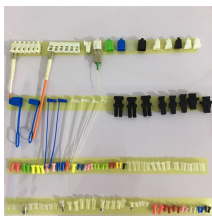
Find out how to properly wire an electrical panel box with a comprehensive diagram and step-by-step instructions.



In this video, we'll walk you through the process of wiring a home distribution box with a detailed connection diagram.



Hey, in this article we are going to see the Single Phase Distribution Box Wiring Diagram and Connection Procedure. A distribution board or distribution box is where the main power supply is ...



Through the MCB phase lines are distributed to electrical wiring for lighting, fixed devices, and power distribution points. This type of arrangement is the commonly used method of distribution ...



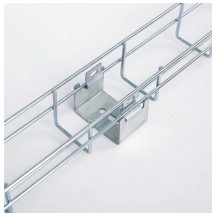
Learn how to install a distribution box safely and correctly. Covers wiring, placement, standards, and expert tips for a compliant setup.



In this video, we'll walk you through the process of wiring a home distribution box with a detailed connection diagram. Whether you're an electrician or a DIY enthusiast, this guide will help ...



Within residential and light commercial environments, single-phase power distribution is standard practice, and understanding how to properly wire a Db box is essential for electricians and ...



Understand the comprehensive process of installing a residential breaker box, ensuring safe power distribution and code compliance.



Proper wiring of a DB board is crucial for safety and efficient power distribution. This guide provides a step-by-step approach on how to wire a DB board safely and correctly.

Contact Us

For more information, pricing, or custom data center solutions, please contact us:

Website: <https://yoahorroenergia.es>

Email: hello@yoahorroenergia.es

Phone: +233 54 318 7269

Address: Plot 28, Spintex Road, Accra, Greater Accra, Ghana

This document is for informational purposes only. Specifications subject to change without notice.

