

# How to connect an FC flange to a terminal box



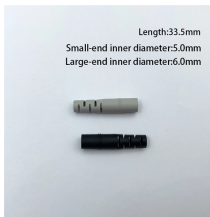
## How to connect an FC flange to a terminal box



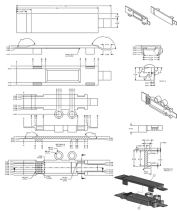
FCA501 Ductile iron flange coupling adapter  
Connects plain-end pipe to a flange. Nominal Sizes 3 - 16 inches Working Pressure Up to 260 psi Pipe Compatibility ...



Both FC/PC and FC/APC jumpers are equipped with alignment keys, which need to be accurately inserted into the corresponding key slots of the matching components to minimize insertion loss of ...



Insert flange gaskets (not provided by Ford Meter Box) between the flange faces. Install Flange Lugs behind the existing flanges using longer bolts & nuts to accommodate flange and Flange Lug thickness.



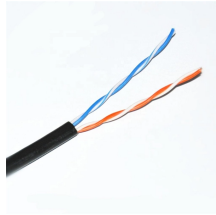
FC connector is generally used in telecommunication networks, and a nut is screwed to the adapter, which has the advantage of being reliable and dust-proof, and the disadvantage is that ...



Learn everything about fiber termination boxes—types, installation steps, and maintenance tips to ensure reliable fiber optic network performance.



Be careful not to get epoxy between the FC connector body and flange. Insert fiber into ferrule. Allow epoxy to cure. Slip boot over connector to finish installation. Polish connector tip and optical fiber. ...



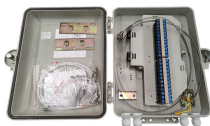
Learn the correct methods for making flange connections and avoid common mistakes with bolts and gaskets.



One piece integral connectors allow the user to switch from piping flange standards to instrument compression with minimum cost and added safety. This system eliminates the need for additional ...



Installation of the fiber termination box must be done under the supervision of a skilled technician or engineer. Here are the various stages in the installation of the FTB.



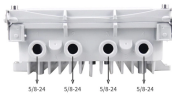
The outdoor optical fiber cable is connected to the terminal box. The purpose is to fuse the optical fiber and the pigtail in the optical cable, and lead it out through a jumper.



USE Alpha FC provides a fast, easy way to connect and restrain plain-end pipe to flanged fittings. COMPATIBILITY Ductile iron, cast iron (class A, B, C & D), PVC IPS size (Sch 40, Sch 80 and SDR ...



Fibertronics offers a variety of FC adapters that are available in single mode & multimode as well as simplex with round & square types for flange mounts.



The FC to FC UPC/APC Single-mode Simplex Fiber Adapter with Flange (Plastic Housing) is designed for stable, low-loss connections between two FC connectors in single-fiber ...



Learn the correct methods for making flange connections and avoid common mistakes with bolts and gaskets.

## Contact Us

For more information, pricing, or custom data center solutions, please contact us:

Website: <https://yoahorroenergia.es>

Email: [hello@yoahorroenergia.es](mailto:hello@yoahorroenergia.es)

Phone: +233 54 318 7269

Address: Plot 28, Spintex Road, Accra, Greater Accra, Ghana

This document is for informational purposes only. Specifications subject to change without notice.

