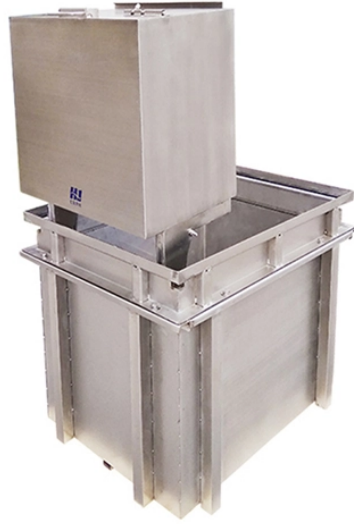


# How to connect fiber optic cable to a single-mode transceiver



## Overview

Choose an SFP/SFP+ transceiver module compatible with your fiber optic cable type (e. Plug the fiber optic cable into the appropriate connector on the SFP/SFP+ . In high-speed data networks, the seamless integration of fiber optic cables with SFP (Small Form-Factor Pluggable) modules is critical for reliable signal transmission. SFP transceivers bridge electrical and optical signals, making them indispensable in data centers, telecom networks, and. This section describes how to install optical transceivers on the SFP or SFP+ ports and connect them to the ports of the peer device using optical fibers according to the network plan. The USG supports both 1 Gbit/s, 10 Gbit/s, and 40 Gbit/s optical modules. Direct attach cables with pre-terminated SFP connections may also be used. Start by confirming the correct fiber type—single-mode or multimode—since mixing them will lead to transmission errors.

## How to connect fiber optic cable to a single-mode transceiver



Learn how to connect fiber media converters step by step, check key setup details, and choose the right model to ensure stable fiber-to-copper integration.



An SFP module (or optical transceiver) converts electrical signals from network devices (switches, routers) into optical signals for fiber transmission and vice versa.



This article will walk you through the necessary steps to ensure a successful connection between your fiber optic cable and your SFP module, covering the essential components, the installation process, ...



Most modern fiber-enabled network switches require an SFP transceiver module featuring a duplex (two strand) multimode OM3 or duplex single mode OS2 connection with LC connectors. Direct attach ...



Before connecting an optical fiber, attach temporary labels to both ends of the optical fiber for identification. Remove protective caps from optical fiber connectors, insert optical fibers into the ...



Always integrate duplex (two strand) fiber optic cabling or higher strand counts. Most modern SFP transceiver modules feature duplex LC connections. Terminate your fiber optic cabling with two LC ...



Fiber Type: Ensure the fiber optic cable type (single-mode or multi-mode) is compatible with the media converter or SFP/SFP+ transceiver. Connector Type: Verify the fiber optic connector ...



In this guide, you will learn what a single mode SFP transceiver is, how it works, the key specifications and types available, and where it is commonly used.



These transceiver modules are hot-swappable input/output (I/O) devices that plug into 100BASE, 1000BASE and 10GBASE ports (for SFP+), which connect the module port with the fiber ...



Documents sorted by newest first. Communicate from 16 to 80 kilometers with port-powered single-mode fiber-optic transceivers.

## Contact Us

For more information, pricing, or custom data center solutions, please contact us:

Website: <https://yoahorroenergia.es>

Email: [hello@yoahorroenergia.es](mailto:hello@yoahorroenergia.es)

Phone: +233 54 318 7269

Address: Plot 28, Spintex Road, Accra, Greater Accra, Ghana

This document is for informational purposes only. Specifications subject to change without notice.

