

# How to connect the double-layer small busbar in the server rack



## Overview

In this comprehensive guide, we'll walk you through the process of installing bus bars in electrical panels, covering safety precautions, tools required, installation steps, and best practices. Please refer to <https://link.com/4lFt1ht> for detailed information on E-Line KD Data Rack Busbar Power Distribution Systems on Data Centre white spaces. Our new DATA RACK BUSBAR addresses scalability issues for reliable and flexible Moves- Adds-Changes in your data center white space. AI workloads, GPU clusters, and high-performance computing are pushing server rack power density to new extremes — from the historical 5-7 kW per rack to 20-40 kW or more. Each increase in load magnifies one fundamental challenge: how to build safe, code-compliant grounding infrastructure that. If you've ever wondered how to achieve a flawless busbar installation, you're in the right place. Whether you're a seasoned professional or an enthusiastic. With TE Connectivity's (TE) plug-and-play power busbar and cable assembly solutions for the datacenter and AI, power distribution architecture, the customer gets a standardized platform for simple system designs. These solutions are fully compatible with specifications designed for use in. How do you figure out the right number of

rack units for your network rack?

Labeling your server and network racks and why you really need to do it! Check out the video for all of this information! What is a server and/or network rack and how do they compare?

Server racks, from a strict technical. This catalog includes information on features, construction, application, installation, electrical data, busbar configuration, wiring diagrams, and dimension drawings for Busway Systems. Powerbus, I-Line, I-Line II Busway, Power-Zone The documentation available online is generally the latest.

## How to connect the double-layer small busbar in the server rack



Learn about the different methods of connecting bus bars and how they are used in electrical systems. Get insights into the importance of proper bus bar connections.



Installing bus bars in electrical panels is a crucial step in ensuring efficient power distribution, safety, and ease of maintenance. By following the step-by-step guide outlined above, you can confidently install ...



As rack densities rise and standards tighten, roll-formed busbars and grounding channels provide the consistency and precision that field fabrication can't match. Ready to eliminate grounding ...



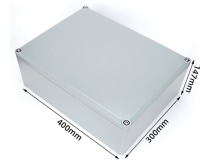
Wiring up a server rack can be simple or complex, depending on what you are doing and your environment. This blog brings some clarity to how to get from point A to point B with minimal ...



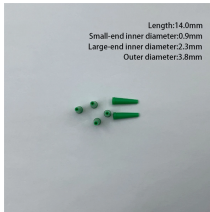
To mount this a bit easier to my server rack, I decided to remove the brackets and just mount it directly on the server rack itself (see attached "bus-bar-mounting" image).



This catalog includes information on features, construction, application, installation, electrical data, busbar configuration, wiring diagrams, and dimension drawings for Busway Systems.



To power the critical IT infrastructures on the Data Rack Cabinets, EAE offers a highly flexible and reliable Busbar System to meet the "configurability" challenge in the Data Centres finding the way to ...



These solutions are fully compatible with specifications designed for use in rack-level busbar applications, including the power shelf, the battery backup unit (BBU) shelf, the IT gear shelf, and ...



To power the mission critical IT infrastructures on the Data Rack Cabinets, EAE offers a highly flexible and reliable Busbar System to meet the "Scalability" challenge in the Data Centers...



Connection: Connect the busbar to the power source and other components, following proper wiring practices. Ensure all connections are tight and secure to prevent electrical faults.

## Contact Us

For more information, pricing, or custom data center solutions, please contact us:

Website: <https://yoahorroenergia.es>

Email: [hello@yoahorroenergia.es](mailto:hello@yoahorroenergia.es)

Phone: +233 54 318 7269

Address: Plot 28, Spintex Road, Accra, Greater Accra, Ghana

This document is for informational purposes only. Specifications subject to change without notice.

