

How to disconnect the power when installing a large electrical distribution box



Overview

Ensure that the power is completely cut off in the installation area, and use an electrical tester to verify that there is no electricity before starting the operation. For a journeyman electrician or master electrician, a deep understanding of these regulations is. How do I contact my "Local Inspection Desk?"

" How do I make a change to my design?

What are "civil as-builts" and do I need to turn them in at my final inspections?

What is the process for installing an additional gas meter in my home?

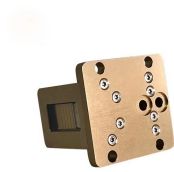
What is the process for removing existing gas service in my. An electrical distribution box, also known as a power distribution box, panelboard, or

consumer unit, is the core of an electrical system. A well-chosen spot can help your system run better and last longer. The box should be safe from heat, moisture, and. Main Breaker: This is the primary device that disconnects power from the electrical service. It is mainly used to isolate fault circuits, prevent overload, and ensure the safe operation of.

How to disconnect the power when installing a large electrical distr



Restore power to the installation area by turning on the electrical circuit at the main panel. Test each circuit breaker or fuse by switching it on and off to verify proper operation. Use a voltage tester or ...



For electricians in the field, verifying a compliant service disconnect installation is a common task. Follow these steps to ensure the setup meets NEC requirements:



Find out how to properly wire an electrical panel box with a comprehensive diagram and step-by-step instructions.



A detailed guide on how to wire a 100 amp breaker box with a wiring diagram. Learn the step-by-step process and necessary tools for a successful installation.



First of all, you need to have a simple understanding of the definition of a distribution box, and make it clear which kind of distribution box you want to install.



A detailed guide on how to wire a 100 amp breaker box with a wiring diagram. Learn the step-by-step process and necessary tools for a successful installation.



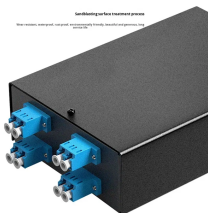
Safely install your electrical disconnect box. Comprehensive guide covers terminal identification, wiring diagram execution, and post-installation testing.



This article provides a detailed overview of the entire process of installing a distribution box, from pre-installation preparation to post-installation maintenance, and summarizes common ...



Download the guide to PG& E utility requirements for establishing gas or electric service to new or remodeled customer installations.



Learn how to install a distribution box safely and correctly. Covers wiring, placement, standards, and expert tips for a compliant setup. A distribution box is the heart of any electrical ...



In this guide, we'll break down everything you need to know about NEC guidelines about service disconnect locations to stay compliant and improve electrical safety.

Contact Us

For more information, pricing, or custom data center solutions, please contact us:

Website: <https://yoahorroenergia.es>

Email: hello@yoahorroenergia.es

Phone: +233 54 318 7269

Address: Plot 28, Spintex Road, Accra, Greater Accra, Ghana

This document is for informational purposes only. Specifications subject to change without notice.

