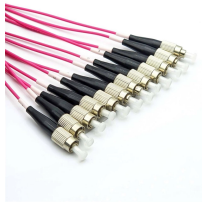


# How to fuse dual-mode and single-mode optical fibers



## How to fuse dual-mode and single-mode optical fibers



Whether you're designing a short-range data center network or a long-distance metro backbone, understanding the distinctions between single vs. dual fiber and single-mode vs. multi ...



A multi-fiber optical connector is designed to simultaneously join multiple optical fibers together, with each optical fiber being joined to only one other optical fiber.



Short answer: Usually yes, you use them in pairs, but the "pair" can be a media converter on one end and a fiber switch (or SFP in a switch) on the other, as long as both sides speak the ...



In the world of fiber optics, the choice between single-mode fused couplers and multimode alternatives depends on your network's specific requirements. Assessing factors such as bandwidth ...



Fused couplers are used to split optical signals between two fibers, or to combine optical signals from two fibers into one fiber. They are constructed by fusing and tapering two fibers together. This ...



This article explores the definitions of important terms, illustrations of each concept, and talks about the traits of multimode and single mode propagation in order to increase readers' ...



In the world of fiber optics, the choice between single-mode fused couplers and multimode alternatives depends on your network's specific ...



Whether you're designing a short-range data center network or a long-distance metro backbone, understanding the distinctions between single vs. dual ...



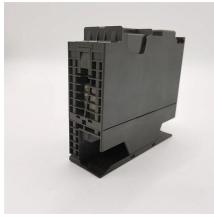
Fusion splicing is the most widely used method of splicing as it provides for the lowest loss and least reflectance, as well as providing the strongest and most reliable joint between two fibers. Virtually all ...



Introduction Optical fiber is a technology that uses very thin strands of glass or plastic to send data using light signals. It's used in everything from home internet to large telecom networks. If ...



Hi guys, in this video you are watching the splicing of two units in one 19" box. The first unit is single mode 12 fibers and the second multimode 12 fibers....



Our SM and double-clad fiber coupler offerings also include a selection of components ideal for OCT applications.



This article demonstrates how to set up a coupling system and examines the multiple tools available in Sequential Mode for beam and fiber coupling analysis, including Paraxial Gaussian Beam ...

## Contact Us

For more information, pricing, or custom data center solutions, please contact us:

Website: <https://yoahorroenergia.es>

Email: [hello@yoahorroenergia.es](mailto:hello@yoahorroenergia.es)

Phone: +233 54 318 7269

Address: Plot 28, Spintex Road, Accra, Greater Accra, Ghana

This document is for informational purposes only. Specifications subject to change without notice.

