

## How to install the flange into the terminal box



### Overview

Place the gasket between the flange faces. All piping and piping components to be installed should be free of foreign materials and construction debris. The gasket seating surface should be free from tool marks, scratches, pits, deposits or gouges greater than the regular machining marks in a circular pattern (excepted of the specified). In this detailed tutorial, we walk you through the essential steps of flange installation and assembly. Whether you're a DIY enthusiast, a professional plumber, or just looking to expand your skills, this video is perfect for you!. This step-by-step guide will help you understand the proper installation process to achieve a secure and leak-proof connection.

## How to install the flange into the terminal box



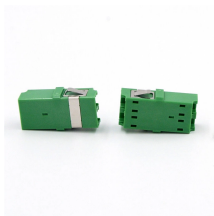
**STRONG CONNECTION.** Tighten the screws in 5 stages order shown in the diagram. Each circle corresponds to a different flange (depen Tighten the nuts lightly (by hand) Tighten the ...



Following these steps will help ensure successful flange installations every time! Flange installation is an important process that requires careful preparation and following the manufacturer's ...



Slide a steel washer onto stud and insert into bolt hole. (If flange requires two side insulation, add an insulating washer after the steel washer). From the opposite end of the stud, place an insulating ...



Properly installing a threaded flange is about more than just tightening a pipe; it is about ensuring the long-term safety and integrity of the piping system.



In this guide, we'll walk you through the steps of flange installation, highlighting important considerations and techniques to make sure your project is built to last.



In this detailed tutorial, we walk you through the essential steps of flange installation and assembly.



Installing a threaded steel flange is a crucial process in various industrial applications, particularly in piping systems for oil, gas, and chemical industries.



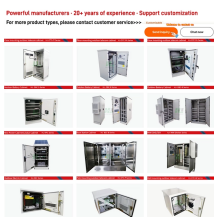
Installing steel flanges correctly is crucial for ensuring the integrity and performance of your piping system. This step-by-step guide will help you understand the proper installation process to achieve a ...



**ANSI FLANGE INSTALLATION GUIDE** Proper installation of ANSI flanges is crucial to ensuring a leak-free and secure connection. Follow these steps carefully, referring to the manufacturer's instructions ...



After storage and transport to the installation location, first mechanically secure the terminal element in the transformer/switchboard. Following this, electrically connect the terminal element to the busbar or ...



Whether you are working on an industrial piping project or a commercial plumbing job, understanding how to install a flange correctly is key to long-term success. In this article, we will walk ...

## Contact Us

For more information, pricing, or custom data center solutions, please contact us:

Website: <https://yoahorroenergia.es>

Email: [hello@yoahorroenergia.es](mailto:hello@yoahorroenergia.es)

Phone: +233 54 318 7269

Address: Plot 28, Spintex Road, Accra, Greater Accra, Ghana

This document is for informational purposes only. Specifications subject to change without notice.

