

# How to leave the length for the fiber optic tray



## How to leave the length for the fiber optic tray



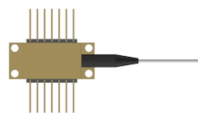
Step 3: Remove just enough fiber to reach the splicing equipment and splice per manufacturer's instructions. Do not remove the entire length of fiber from the tray or twist fibers as they are removed.



Strip outer sheath to expose enough fiber for the application. The length will vary depending on the enclosure. Figure 2 (on page 2) shows the recommended fiber routing for the FST24.



You can install unlisted optical fiber cables in building spaces (other than risers, ducts, or plenum spaces), if the length of the optical fiber cable measured from its point of entrance does not ...



NEC Article 392 explains cable trays, their components, appropriate wiring methods for cable trays, and instances where they are and are not permitted for use. It also focuses on ...



In order to ensure that all is safe, a firm piece of metal should divide the tray or leave between the two kinds of wires at least 50mm to 100mm apart. In my case, a divider is the most ...



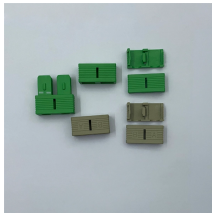
A case study demonstrates the successful deployment of a tray system in a 5MW data center, highlighting significant improvements in installation time and error reduction.



Step 2: Remove just enough fiber from the tray to reach the splicing equipment. Do not remove the entire length of fiber from the tray or twist fibers as they are removed.



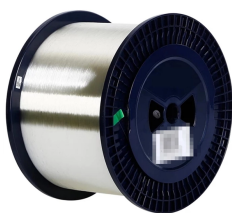
Check the cable length to make sure the cable being pulled is long enough for the run to prevent having to splice fiber and provide special protection for the splices. Try to complete the installation in one pull.



Installing a fiber optic splice closure efficiently and effectively requires attention to detail and adherence to specific procedures. Here's a structured guide to ensure optimal installation, ...



Cut the flexible hose to the desired length, then insert one end of the hose into the hose bracket and route the hose to the desired location at the top of the cabinet/rack.



They don't care about fiber length. You can fit fibers with 10cm length difference in there no problem. Makes getting things organised much easier. I start by attaching the tube to the splice tray, then flare ...

## Contact Us

For more information, pricing, or custom data center solutions, please contact us:

Website: <https://yoahorroenergia.es>

Email: [hello@yoahorroenergia.es](mailto:hello@yoahorroenergia.es)

Phone: +233 54 318 7269

Address: Plot 28, Spintex Road, Accra, Greater Accra, Ghana

This document is for informational purposes only. Specifications subject to change without notice.

