

How to select a high-voltage bus power supply



How to select a high-voltage bus power supply



It is the simple, versatile, fast and economical solution for supplying power to electrical loads and is unique because the busway can be instantly tapped at any location, with a variety of plug-in units.



Network Cabinet & Rack

Without proper design and management of DALI power, issues such as flickering, communication errors, or device failures can occur. This makes understanding bus voltage ...



Find reliable high voltage power supplies for precision applications. Choose from custom, PCB, modular, and low- to high-power units engineered to meet your needs.



This guide outlines the critical factors to consider when selecting or designing a high-voltage power supply for industrial and laboratory applications.



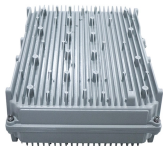
The key challenges of an appliance auxiliary power supply are how to provide safe and reliable power while delivering high performance with low power consumption and low bill-of-materials (BOM) cost.



A system with minimum failure rates and little power consumption can be realized by properly sizing the bus capacitors, braking choppers, power supplies, cabling and earthing, and ...



After years of dedication, we've crafted an extensive high voltage power supply portfolio, ranging from 6W to 10kW, with a range of package options, including ...



This guide outlines the critical factors to consider when selecting or designing a high-voltage power supply for industrial and laboratory applications.



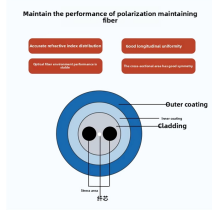
After years of dedication, we've crafted an extensive high voltage power supply portfolio, ranging from 6W to 10kW, with a range of package options, including wire lead modules, chassis mounts, and ...



Master high voltage power supply selection with our expert guide. Learn safety protocols, types, applications, and maintenance for industrial systems.



Selection chart for comparing the Benchtop AC-DC High Voltage Power Supplies, and Rack-mount AC-DC High Voltage Power Supplies by Matsusada Precision Products.



NAI's AC/DC standalone EMI compliant power supplies accept a 3Ø AC input as well as a +270 Volt DC input and are available in a single output with operating power of 2,000 Watts. All units are specified ...

Contact Us

For more information, pricing, or custom data center solutions, please contact us:

Website: <https://yoahorroenergia.es>

Email: hello@yoahorroenergia.es

Phone: +233 54 318 7269

Address: Plot 28, Spintex Road, Accra, Greater Accra, Ghana

This document is for informational purposes only. Specifications subject to change without notice.

