

Huawei Core Gigabit Switch Parameters



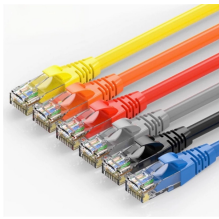
Overview

Built on next-generation high-performance hardware, the S5700 provides large capacity, high reliability (two power slots and hardware-based Ethernet OAM), and high-density GE and multi-GE ports, as well as 25GE or 100GE uplink ports. It also supports Energy Efficient Ethernet (EEE) and. Huawei's comprehensive portfolio of products and solutions enables you to realize smooth digital transformation and rapid growth of virtualization, Big Data, and cloud services. Huawei switches already help customers achieve success in industries such as finance, Internet, retail, education. There are several S5736-S24UM4XC bundles, which consist of different power supplies and ports, as listed in Table 4-1481. By default, multi-GE ports support 100 Mbit/s and 1000 Mbit/s. You can purchase an RTU license to increase the port rate to 2. There is a label. They offer multiple models, such as those with twenty-four GE electrical ports, twenty-four GE optical/electrical hybrid ports, and forty-eight GE optical ports. These switches feature service processing capabilities. By leveraging Huawei's unified software platform, CloudEngine S5755-H series creates a.

Huawei Core Gigabit Switch Parameters



CloudEngine S5732-H series switches offer enhanced gigabit connectivity, simple convergence of wired and wireless networks and free mobility to create a multi-purpose network through consistent user ...



Huawei S5330-HI gigabit ethernet switches are Huawei-developed next-generation agile switches that provide fixed full gigabit access and 10GE uplink interfaces as well as one or two slots for uplink ...



Huawei CloudEngine S5755-H series switches are high-quality gigabit access switches that provide 24 or 48 10/100/1000BASE-T downlink ports, four 25GE plus two 100GE uplink ports, and expansion ...



By default, multi-GE ports support 100 Mbit/s and 1000 Mbit/s. You can purchase an RTU license to increase the port rate to 2.5 Gbit/s, 5 Gbit/s, or 10 Gbit/s. There is a label on the rear side of the ...



Gigabit access switches providing all-GE electrical ports. The CloudEngine S5731-S series offers a range of standard gigabit access switches, with all-GE electrical/optical ports and fixed 10 GE uplink ...



Based on the cutting-edge hardware and Huawei Versatile Routing Platform (VRP) software, the S5700-EI provides a large switching capacity and high-density GE ports to implement 10 Gbit/s upstream ...



Huawei campus switches are ideal for building future-proof campus networks with simplified management, high reliability, and service intelligence, across industries such as enterprises, ...



The switch supports user-defined traffic forwarding modes, forwarding behaviors, and search algorithms. The switch has a built-in high-speed and flexible processor chip designed specifically for Ethernet.



Huawei eKitEngine S530 series switches (S530 for short) are enhanced fully-managed gigabit switches designed for the small- and medium-sized business (SMB) market.



Built on next-generation high-performance hardware, the S5700 provides large capacity, high reliability (two power slots and hardware-based Ethernet OAM), and high-density GE and multi-GE ports, as ...

Contact Us

For more information, pricing, or custom data center solutions, please contact us:

Website: <https://yoahorroenergia.es>

Email: hello@yoahorroenergia.es

Phone: +233 54 318 7269

Address: Plot 28, Spintex Road, Accra, Greater Accra, Ghana

This document is for informational purposes only. Specifications subject to change without notice.

