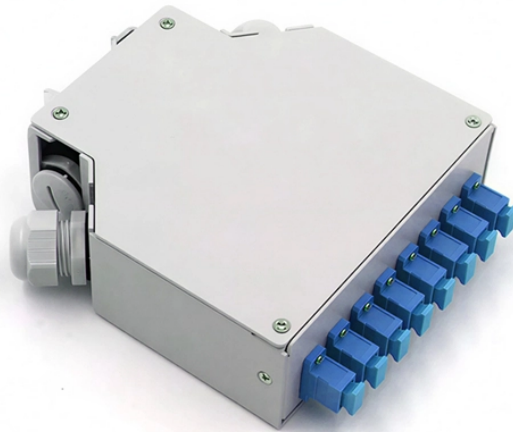


Huawei Intelligent Access Switch Configuration



Overview

In this video, I walk you through the complete configuration of a Huawei S5700 switch, covering: System View Mode Hostname and VLAN Interface IP Addressing Access & Trunk Port Setup Static Routing Secure Remote Access via SSH AAA User Authentication . In this video, I walk you through the complete configuration of a Huawei S5700 switch, covering: System View Mode Hostname and VLAN Interface IP Addressing Access & Trunk Port Setup Static Routing Secure Remote Access via SSH AAA User Authentication . This document describes how to log in Huawei S series switches for the first time and fast configure the switches, and describes the procedures of configuring unconfigured switches in three scenarios: Small-Sized Campus Networks, Small- and Mid-Sized Campus Networks and Mid-sized Campus WLANs. Contents 1 Before You Start 2 Small-Sized Campus Networks 2. Use the following AAA commands to create a new user. For example: Replace USERNAME with the new username, set the password, define service-type (telnet, ssh, etc.), and specify. Aggregation and access devices downstream to the core layer can automatically go online through Zero Touch Provisioning (ZTP). During the initial batch deployment of access

devices, you are advised to import device and link information to iMaster. ☐☐
Learn how to fully configure a Huawei S5700 Series switch step-by-step using real CLI commands! In this video, I walk you through the complete configuration of a Huawei S5700 switch, covering:.

Huawei Intelligent Access Switch Configuration



The text covers tasks such as creating a user, VLAN configuration, port settings, enabling SSH and Telnet services, configuring Spanning Tree Protocol (STP), and other basic management operations ...



The real question for anyone serious about their network's performance, reliability, and security isn't if they need these commands, but how deeply they understand and utilize the nuances ...



The document provides configuration instructions and commands for basic switch configuration using Huawei switches. It covers topics such as changing the hostname, configuring user accounts and ...



This guide describes how to install S2700, S3700, S5700, and S6700 series switches. It also explains how to log in to your switch for the first time. The installation, cable connection, and login methods for ...



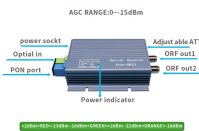
For this configuration procedure, see the corresponding Configuration Guide - Basic Configuration based on the version of the device. Log in to the switch from an operation terminal through Telnet.



☐☐ Learn how to fully configure a Huawei S5700 Series switch step-by-step using real CLI commands!



Small-Sized Campus Networks This section uses the S2750 as an access switch (ACC1), S5700 as a core switch (CORE), and an AR series router as an egress router (Router) as examples to ...



Aggregation and access devices downstream to the core layer can automatically go online through Zero Touch Provisioning (ZTP). This section describes three automatic deployment ...



This document describes how to log in Huawei S series switches for the first time and fast configure the switches, and describes the procedures of configuring unconfigured switches in three ...



When configuring access switches to be managed by the controller, you can use the core switch as the management subnet gateway of the access switches, and configure the management VLAN auto ...

Contact Us

For more information, pricing, or custom data center solutions, please contact us:

Website: <https://yoahorroenergia.es>

Email: hello@yoahorroenergia.es

Phone: +233 54 318 7269

Address: Plot 28, Spintex Road, Accra, Greater Accra, Ghana

This document is for informational purposes only. Specifications subject to change without notice.

