

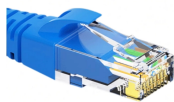
# Huawei Optical Switch Module



## Huawei Optical Switch Module



Huawei offers a comprehensive portfolio of pluggable StarryLink optical modules for data center networks, with various models providing flexible plug-and-play solutions tailored to diverse interface ...



To determine whether optical modules delivered for Huawei switches before July 1, 2013 are certified ones, contact Huawei technical support. If your optical modules are delivered after July 1, 2013, use ...



The following uses the Moduletek SFP-10G-LR module connected to a Huawei S6700 switch as an example to introduce how to read information of the connected optical module on a Huawei switch.



Confirm whether the optical module on the Down port is certified by Huawei Data Center switches. CE series switches must use Huawei Data Center switch ...



Huawei's StarryLink optical modules for data center networks offer seamless interconnection from GE to 800GE across all scenarios, delivering customers an ultra-reliable, long-distance, and highly secure ...



A switch must use optical or copper modules that have been certified for use on Huawei switches. Non-certified optical or copper modules cannot ensure transmission reliability and may affect service ...



As a professional optical module manufacturer, Walsun can provide optical modules compatible with various brand switches, including Huawei. For the optical module configuration of ...



Confirm whether the optical module on the Down port is certified by Huawei Data Center switches. CE series switches must use Huawei Data Center switch certified optical modules; the reliability of ...



A switch must use optical or copper modules that have been certified for use on Huawei switches. Non-certified optical or copper modules cannot ensure transmission reliability and may affect service ...



This article summarizes several solutions for using optical modules with switches and common problems encountered during usage, along with specific solutions.



If an optical module is installed in a running switch, you can run the display transceiver command to view parameters of the optical module, including the center wavelength, transmission ...

## Contact Us

For more information, pricing, or custom data center solutions, please contact us:

Website: <https://yoahorroenergia.es>

Email: [hello@yoahorroenergia.es](mailto:hello@yoahorroenergia.es)

Phone: +233 54 318 7269

Address: Plot 28, Spintex Road, Accra, Greater Accra, Ghana

This document is for informational purposes only. Specifications subject to change without notice.

