

# Industrial Switch Port Introduction



## Overview

Industrial switch, also known as industrial Ethernet switch, is a piece of network technology designed specifically for use in industrial plants. It provides reliable, high-speed data transmission of industrial networks, including 10G industrial switches for faster speeds. Oil rigs, railways, manufacturing plants, and similar applications require industrial-grade network equipment that can tolerate an extended range of temperature, humidity, vibration. Industrial network switches connect automation equipment, controllers, and other such devices. Take a look at our previous articles to learn what control engineers need to know. Comprehensive Analysis of Industrial Switches: An In-Depth Guide to Types, Pros and Cons, and Application Scenarios In the wave of the Industrial Internet, industrial switches, serving as the "nerve center" that connects devices and ensures data flow, have become increasingly crucial. This article introduces the types, forms, and. r the world.

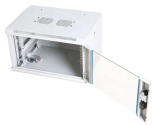
## Industrial Switch Port Introduction



The core value of industrial switches lies in their three key technical characteristics—environmental adaptability, reliability, and scalability—which directly determine their ...



This 2026 guide provides a comprehensive technical understanding of what industrial switches are, how they work, where they are used, applicable standards, and how to select the right ...



Test your knowledge on industrial Ethernet switches. Do you know the available options and configurations? How about a unique product that allows your switch to be used with fiber or copper? ...



This article introduces the types, forms, and connectors commonly used in industrial Ethernet switches, providing you with a clear understanding of their functionality and applications.



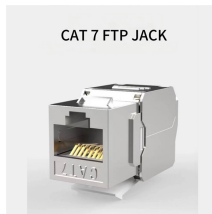
Industrial switch, also known as industrial Ethernet switch, is a piece of network technology designed specifically for use in industrial plants. It provides reliable, high-speed data transmission of industrial ...



Introduction to Network Switches for Industrial Applications Industrial network switches connect automation equipment, controllers, and other such devices. Learn about unmanaged, ...



Industrial switches with high reliability and redundancy have emerged as the perfect solution for complex industrial applications. Here, we have listed some of the main characteristics of ...



Industrial Ethernet switches are mainly used for real-time Ethernet data transmission in complex industrial environments.



What is an Industrial Ethernet Switch? An industrial Ethernet switch is a type of network switch designed to operate in harsh industrial environments.



D-Link Industrial Ethernet Switches are built to tolerate harsher conditions than most standard switches in terms of temperature, dust, lightning strike, vibration, corrosion, electromagnetic interference, and ...

## Contact Us

For more information, pricing, or custom data center solutions, please contact us:

Website: <https://yoahorroenergia.es>

Email: [hello@yoahorroenergia.es](mailto:hello@yoahorroenergia.es)

Phone: +233 54 318 7269

Address: Plot 28, Spintex Road, Accra, Greater Accra, Ghana

This document is for informational purposes only. Specifications subject to change without notice.

