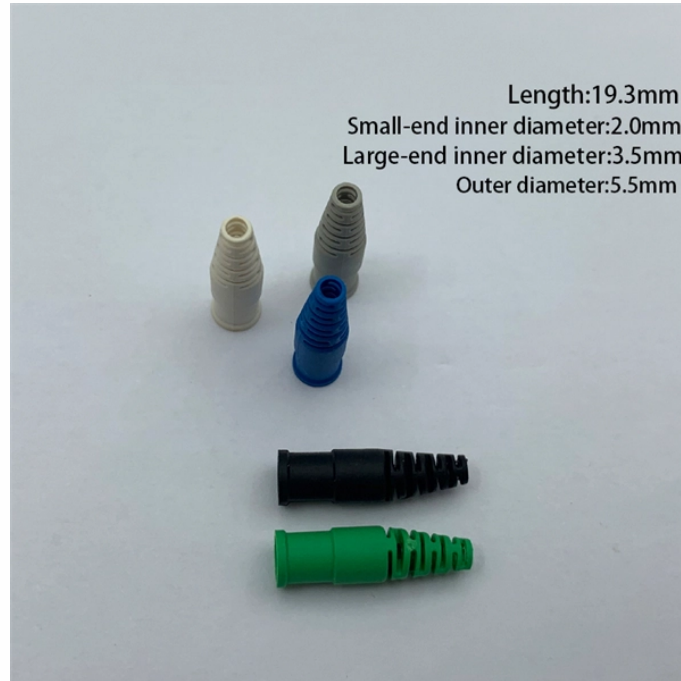


Installation Method of Large Cable Distribution Box



Installation Method of Large Cable Distribution Box



Care must be given to the run lengths, number of cable turns, and cable sheave size to ensure the cable's maximum pulling tension, minimum bending radius, and maximum allowable sidewall ...



Before starting the installation, finding a proper place for putting the distribution box is crucial, because it largely decides the safety and convenience of maintenance. Let's see what factors ...



Reliable cable distribution boxes ensure safe, efficient power management for residential, commercial, and industrial systems. Learn installation and safety tips.



Distribution circuits to residential areas are similar to overhead designs, except the installation is underground. Primary mains, with take-offs, are installed to which are connected the distribution ...



Learn how to wire a distribution box step by step! This video shows real on-site footage of electrical installation, demonstrating safe and standardized wiring methods used by professionals.



Not only does this cable entry system meet the requirements of the regulations, but it also cuts the time taken to fit the board to trunking by up to four times.



Learn how to install a distribution box safely and correctly. Covers wiring, placement, standards, and expert tips for a compliant setup.



The document is intended to help electrical engineers and supervisors install distribution boards for electrical projects according to contract requirements and specifications.



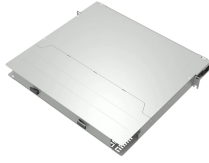
Read and understand this entire manual and any additional site-specific installation documents before attempting to assemble, install, or operate the luminaire. If you have any questions regarding the ...



1.0. Scope This methodology document highlights the technical guidelines for the installation of Electrical Distribution Boards (DBs).



9) The wood brick and iron parts needed for the installation of the distribution board need to be buried in advance, and the exposed distribution box should be fixed ...



The length of time a system can operate without requiring repairs or replacement is dependent on the methods and procedure utilized during the installation and ...

Contact Us

For more information, pricing, or custom data center solutions, please contact us:

Website: <https://yoahorroenergia.es>

Email: hello@yoahorroenergia.es

Phone: +233 54 318 7269

Address: Plot 28, Spintex Road, Accra, Greater Accra, Ghana

This document is for informational purposes only. Specifications subject to change without notice.

