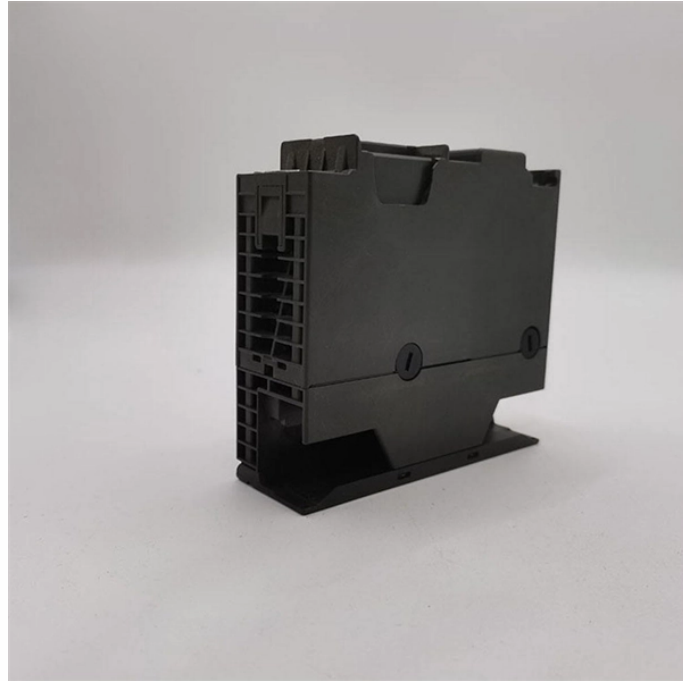


# **Installation Process of Low Voltage Distribution Box**



## Installation Process of Low Voltage Distribution Box



Today, I'd like to share some details about installing a low-voltage distribution box. Make sure to reserve enough power outlets inside the box—at least three 5-port outlets, or install a...



Low voltage distribution cabinets (LVDCs), also known as distribution cabinets, are essential infrastructure components that play a critical role in modern urban underground electrical distribution ...



Before starting the installation, finding a proper place for putting the distribution box is crucial, because it largely decides the safety and convenience of maintenance. Let's see what factors ...



Learn how to install a distribution box safely and correctly. Covers wiring, placement, standards, and expert tips for a compliant setup.



All safety codes, safety standards and/or regulations must be strictly observed in the installation, operation and maintenance of this equipment. Only authorized personnel should be allowed to work ...



This comprehensive portfolio for low-voltage power distribution and electrical installation technology covers every requirement – from the switchboard to the socket outlet.



In designing the distribution board and power cabinet, ABB drew upon its wealth of experience with low-voltage switchgear and placed a strong emphasis on the product's ease of installation, operations, ...



Learn the fundamentals and best practices of low voltage wiring to enhance the safety and efficiency of your electrical installations.



What Is Low Voltage Wiring?Its UsesInstalling Low Voltage WiringBenefits of Low Voltage WiringWhat Types of Businesses Benefit from Low Voltage Wiring?How Does Low Voltage Wiring Work?Low Voltage Wiring BasicsEthernet CablesHow to Protect Low Voltage Wiring?Where Do You Install Low Voltage Wiring?This question can be answered in two ways: where low-voltage cabling starts and where it can end. Different answers to these questions exist, but the commonality is that all low-voltage wiring runs to and from the structured cabling enclosure. To safely install structured cabling, the enclosure will have a cable running to it from a demarcation poi...See more on [thenetworkinstallers](#) .sb\_doct\_txt{color:#4007a2;font-size:11px;line-height:21px;margin-right:3px;vertical-align:super}.b\_dark .sb\_doct\_txt{color:#82c7ff}Al Hassan LLC



A step-by-step guide to installing plastic low-voltage boxes, including tools, preparation, and safety tips for a quick and efficient installation process.



Safely install your low voltage media boxes in open walls. Learn selection, mounting techniques, and high-voltage separation requirements.

## Contact Us

For more information, pricing, or custom data center solutions, please contact us:

Website: <https://yoahorroenergia.es>

Email: [hello@yoahorroenergia.es](mailto:hello@yoahorroenergia.es)

Phone: +233 54 318 7269

Address: Plot 28, Spintex Road, Accra, Greater Accra, Ghana

This document is for informational purposes only. Specifications subject to change without notice.

