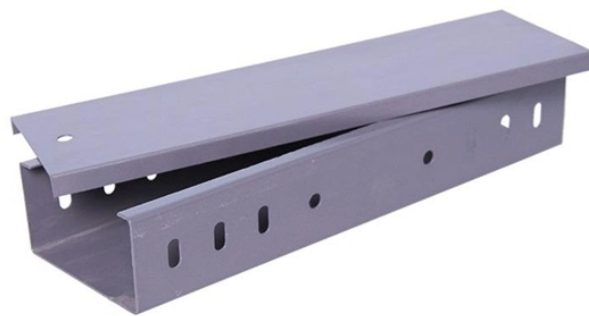


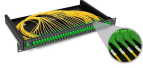
Installation of Western European Electrical Distribution Boxes



Overview

This article offers a practical, general installation workflow and ongoing maintenance guidance ideal for overseas projects. comew buildings and retrofit measures. The controllers for building and room automation is becoming smart-er and smarter - but the electrical install r-free installation is guaranteed. the distribution box ible over the life of the. Comply with standards: Follow NEC, IEC, or local codes. Used to house electrical or electronic switchgear, control gear and equipment. Complete description of a single phase European circuit breaker box/consumer unit, showing electricity entering the residence through the meter, main switch, residual current breakers, and individual switches.

Installation of Western European Electrical Distribution Boxes



The aim of the present guide is to provide a clear, practical and step- by-step explanation for the complete study of an electrical installation, according to IEC 60364 series and other relevant IEC ...



Our complimentary Electrical Installation Guide provides you with the guidance you need for designing, installing, inspecting, and maintaining electrical installations in accordance to IEC standards. IoT ...



For European-style home electrical meter boxes: Refer to this video. For American-style ones: Check the corresponding video.



A practical general guide to installing and maintaining electrical power distribution boxes for international buyers. Includes safety best practices and product options.



§ These regulations apply to the design and erection of electrical installations. The regulations apply to both the selection and installation of electrical equipment.



Here you can download the program for the configuration of our electrical cabinets. Its been designed to simplify the preparation of quotations and to define the configuration of metal cabinets and ...



We supply shut-off and control valves with DVGW, FDA, or EG 1935 certification, either manually or automated with pneumatic or electric rotary and swivel drives.



With our Hanse series we offer simple possibilities for junction boxes and cable junction boxes, especially in the surface-mounted sector. With the help of the integrated terminals, all installation ...



Whether you're planning a full build or retrofitting older systems, our experts ensure your installation meets both technical and aesthetic standards. We work closely with architects, contractors, and ...



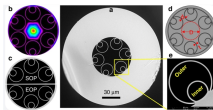
Learn how to install a distribution box safely and correctly. Covers wiring, placement, standards, and expert tips for a compliant setup.



Complete description of a single phase European circuit breaker box/consumer unit, showing electricity entering the residence through the meter, main switch, residual current breakers, and ...



Discover in a unique guide how to design, install, and operate reliable and optimized MV solution according to latest IEC standard. Read more about innovation and evolution to increase ...



The Marienturm in the Central Business District in Frankfurt am Main is installed in a resource-saving and sustainable way thanks to distribution boxes from Wieland and the gesis® installation connector ...

Contact Us

For more information, pricing, or custom data center solutions, please contact us:

Website: <https://yoahorroenergia.es>

Email: hello@yoahorroenergia.es

Phone: +233 54 318 7269

Address: Plot 28, Spintex Road, Accra, Greater Accra, Ghana

This document is for informational purposes only. Specifications subject to change without notice.

