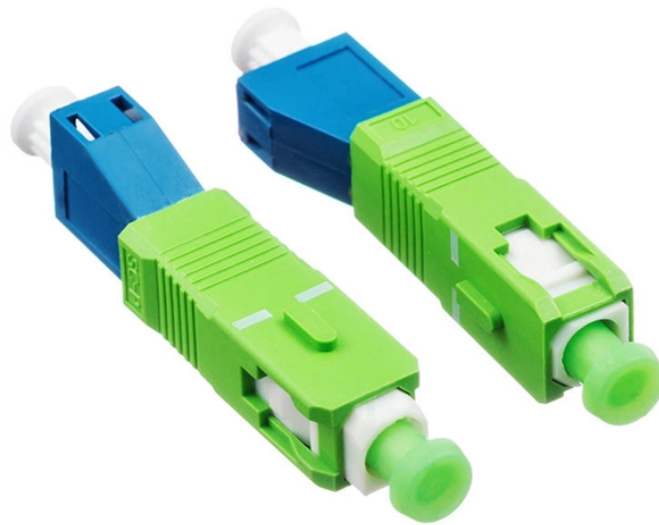


## Installation of a complete set of external electrical boxes and distribution boxes



### Overview

What Is a Distribution Box?

A distribution box, also known as a power distribution unit, is a critical component in any electrical system. It is the control center fo.



## Installation of a complete set of external electrical boxes and distrib



You'll learn what they are, why they're required, the difference between junction boxes and distribution boxes, types available (pull boxes vs splice boxes), NEC 314 sizing requirements, ...



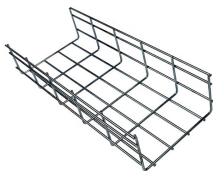
In this step-by-step tutorial, we'll cover: Tools you need...more. Learn how to properly install an electrical box safely and efficiently.



Learn how to install a distribution box safely and correctly. Covers wiring, placement, standards, and expert tips for a compliant setup.



The safe and correct installation of cable distribution boxes is crucial for the stable operation of electrical systems and the prevention of electrical accidents.



This guide explains the key NEC junction box requirements, including box fill, splice rules, accessibility, grounding, outdoor use, common violations, and how to choose the right metal junction ...



Whether you are an electrical contractor or a construction brigade, knowing how to properly and safely install distribution boxes is the basis of ensuring the safe operation of the entire ...



The document outlines the method statement for the installation of electrical conduits and boxes, detailing project specifications, quality assurance, and health and safety standards.



You'll learn what they are, why they're required, the difference between junction boxes and distribution boxes, types ...



Install a secure, weatherproof exterior electrical box. Learn proper selection, secure mounting, moisture exclusion, and essential NEC code compliance.



NEC Article 314 establishes requirements for the installation and use of electrical boxes, conduit bodies, fittings, and handhole enclosures.



The latest NEC updates prioritize adaptive solutions for modern energy demands. With homes now packing solar arrays, EV chargers, and smart-home systems, distribution boxes work harder than ...



This guide explains the key NEC junction box requirements, including box fill, splice rules, accessibility, grounding, outdoor use, common violations, ...

## Contact Us

For more information, pricing, or custom data center solutions, please contact us:

Website: <https://yoahorroenergia.es>

Email: [hello@yoahorroenergia.es](mailto:hello@yoahorroenergia.es)

Phone: +233 54 318 7269

Address: Plot 28, Spintex Road, Accra, Greater Accra, Ghana

This document is for informational purposes only. Specifications subject to change without notice.

