

Instructions for using polymer cable trays in Bulgaria



Instructions for using polymer cable trays in Bulgaria



Cable tray may be used as the Equipment Grounding Conductor (EGC) in any installation where qualified persons will service the installed cable tray system. There is no restriction as to where the ...



Based on this document, it is necessary to connect sections of profiles, trays, cable runs and blocks, steel pipes, and ducts that serve as holders for laying wires and protecting against damage.



Use three conductor cables without EGCs and install a single conductor EGC in the cable tray or use the cable tray as the EGC in qualifying installations as per Section 318-3(c).



In this video, we walk you through the process of installing GRP (Glass Reinforced Polyester) cable trays, a lightweight and versatile alternative to ...



Made from durable PVC, our cable trays are perfect for various applications, from buildings to data centers. Our trays offer a cost-effective and versatile solution for routing, supporting, and protecting ...



Electrically trained specialists charged with installing cable support systems and cable trays. These instructions are based on the standards valid at the time of compilation (June 2021). Please read the ...



It describes inspecting and storing cable trays upon receipt, installing trays flat or vertically, fixing trays to structures, designing trays to carry loads, providing covers in areas with risk of damage, allowing ...



Mastering cable tray installation is crucial for creating a safe, organised, and efficient cable management system. By following this step-by-step guide, you can ensure a seamless setup that ...



It describes inspecting and storing cable trays upon receipt, installing trays flat or vertically, fixing trays to structures, designing trays to carry loads, providing ...



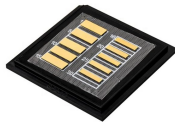
This article provides a comprehensive framework that governs various aspects of cable tray installations, including the types of cables that are deemed acceptable for use, requirements for ...



This method statement covers the site installation of the cable tray & ladders and the requirements of checks to be carried out.



Cable trays/protective casings of plastic materials passing through a hazardous area should not be electrically non-conductive and should ensure satisfactory earthing between any point in these ...



These guidelines will be particularly useful for the design, specification, procurement, installation and maintenance of these systems. Cable ladder systems and cable tray systems are designed for use ...

Contact Us

For more information, pricing, or custom data center solutions, please contact us:

Website: <https://yoahorroenergia.es>

Email: hello@yoahorroenergia.es

Phone: +233 54 318 7269

Address: Plot 28, Spintex Road, Accra, Greater Accra, Ghana

This document is for informational purposes only. Specifications subject to change without notice.

