

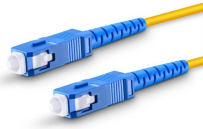
KVM switcher is glowing red



Overview

Solution: First, check if the switch's power indicator light is on and ensure the power source is properly connected. If there's a power switch, make sure it's in the "On" position. A KVM switch brings a cost-effective and convenient way to manage our daily work and entertainment. It simplifies the management of multiple hosts, improves work efficiency, and saves space. This guide helps you troubleshoot common issues with KVM switches and provides solutions for getting dual monitor setups working. You'll also learn when it might be time to upgrade to a more reliable, feature-packed KVM switch like Avico's. Key Points: Dual monitor setups require two video. There are some quick tests that you can perform to rule out potential issues. Many problems stem from simple things like loose cable connections, outdated firmware, or minor compatibility glitches between your devices and the switch.

KVM switcher is glowing red



I've connected the gpu to the monitor directly circumventing the kvm switch and it works. Then same monitor through the kvm via different ports on kvm/gpu/dp cable. Nobody's responded to this post ...



Here's something surprising—most KVM switch problems are caused by small setup mistakes that often go unnoticed. Many users waste hours troubleshooting when the fix is right in front of them. Instead ...



Whether you're experiencing display problems, connectivity issues, or unresponsive controls, knowing how to troubleshoot and fix your KVM switch can save you time and prevent the ...



Troubleshoot KVM flickering and display errors with our step-by-step guide. Fix blank screens and get your dual monitor setup working smoothly.



Use a different video cable, KVM switch, video source, and video destination in your setup to see if the problem persists. Ideally, you should test a component that you know works in another setup.



The two greenlights for each input are on and accurately reflect if a DP cable is plugged in, but the selector button does nothing and the red selector light is just off completely.



Quick fixes for KVM switch monitor not working. Learn how to resolve common monitor issues including detection problems, switching delays, and blank screen.



Problem 1: The KVM switch is not working properly. Solution: First, check if the switch's power indicator light is on and ensure the power source is properly connected.



Before giving away the money, you may wonder if this KVM switch would work as you like and what troubles you may encounter. I have gathered some complaints, feedback, and also ...



Solution: Check the USB cable connection between the KVM switch and your computers. Try replacing it with a shorter, higher-quality USB cable to see if the problem is resolved.



After power cycling your KVM, try one USB at a time in the HID ports to see if that particular peripheral works. If it does not work, it will have to be plugged into one of the blue (USB ...



Quick fixes for KVM switch monitor not working. Learn how to resolve common monitor issues including detection problems, switching delays, and blank screen.

Contact Us

For more information, pricing, or custom data center solutions, please contact us:

Website: <https://yoahorroenergia.es>

Email: hello@yoahorroenergia.es

Phone: +233 54 318 7269

Address: Plot 28, Spintex Road, Accra, Greater Accra, Ghana

This document is for informational purposes only. Specifications subject to change without notice.

