

Kyrgyzstan 1G Optical Network Switch with 3-Year Warranty



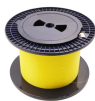
Overview

Featuring a built-in Semtec chip and reliable FP laser / PIN receiver, the SFP module delivers low power consumption and stable optical links for 1G single mode networks like Gigabit Ethernet and Fibre Channel. You can rest assured regarding quality and warranty. The 1G SFP LX Transceiver Module is a high-performance networking solution designed for seamless integration with various switches and routers. It supports data rates of up to 1000Mbps over 100 meters, ensuring reliable connectivity. These compact and hot-pluggable modules efficiently convert electrical signals into optical signals, ensuring seamless data communication across diverse applications. Generic 10/100/1000BASE-T SFP SGMII Copper RJ-45 100m Transceiver Module (Copper, RJ-45, 100m) Generic Compatible 10/100/1000BASE-T SFP SGMII transceiver from QSFPTEK supports up to 100m link lengths over a copper connection via an RJ-45 connector. SFP SGMII is designed for 10/100/1000Base-T. Designed with input from industry professionals, this switch is engineered for. Gigabit Ethernet LAN Switch Family is an industry leading, branch, campus workgroup, and enterprise, value access solution.

Kyrgyzstan 1G Optical Network Switch with 3-Year Warranty



Generic SFP-1G-LX Compatible 1000BASE-LX/LH SFP 1310nm 10km-20km Transceiver supports 1G gigabit Ethernet throughput over singlemode fiber (SMF) with LC connector.



A variety of options allow medium-to-large enterprises to build scalable, secure, high-performance, and smart business networks that are fully manageable. 3-Year Warranty Guaranteed.



FS - HPC, Data Center, Enterprise, Telecom



24-Port Ethernet L2+ Switch, 24x 10/100/1000BASE-T RJ45 with 4x 100/1000M SFP Uplinks, Fanless The S5300-24T4S is a powerful and flexible Gigabit Ethernet switch designed for high-performance ...



Generic SFP-1G-LX Compatible 1000BASE-LX/LH SFP 1310nm ...



Designed with input from industry professionals, this switch is engineered for 1G AV over IP. Enjoy rear-facing ports that ensure a clean integration in AV racks, and pre-configuration for out-of-the-box ...



Discover fiber switches designed for reliable network connectivity. Browse 10G, 2.5G, and gigabit options to expand your bandwidth.



Discover reliable and versatile 1G SFP optical transceivers fully compatible with Cisco, Huawei, Juniper, Arista, and more. Choose from SX, LX, and TX modules.



It supports data rates of up to 1000Mbps over 100 meters, ensuring reliable connectivity. With a robust warranty and easy installation, this module is perfect for professionals seeking efficiency and ...



The HPE Aruba Networking CX 6300 Switch Series delivers unparalleled visibility with built-in analytics for real-time monitoring and a time series database (TSDB) that stores configuration and operational ...



These switches deliver enhanced network security, reliability, and operational efficiency for Small- and Medium-sized Businesses (SMB) or Enterprise edge networks. The Alcatel-Lucent OmniSwitch 6360 ...

Contact Us

For more information, pricing, or custom data center solutions, please contact us:

Website: <https://yoahorroenergia.es>

Email: hello@yoahorroenergia.es

Phone: +233 54 318 7269

Address: Plot 28, Spintex Road, Accra, Greater Accra, Ghana

This document is for informational purposes only. Specifications subject to change without notice.

