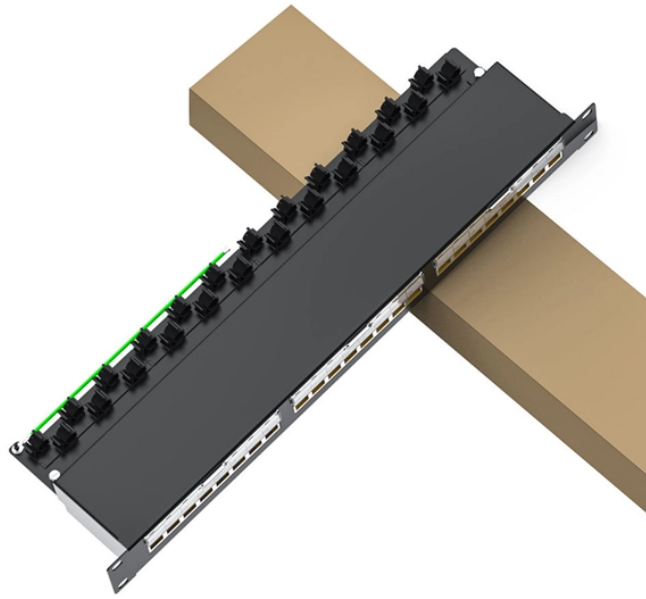


## LDI Machine Laser Diode



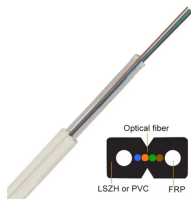
## LDI Machine Laser Diode



current and voltage levels for high power laser diodes. Because high power lasers require high levels of DC current and voltage, and generate high levels of waste heat, the LDI series drivers have a unique ...



Discover and watch videos from various sources with Bing Video, featuring instant previews, direct playback, and smart filters.



This article explains how LDI laser technology is replacing traditional film for PCB manufacturing, offering superior precision, speed, and accuracy ...



Enjoy AI-powered search and earning Microsoft rewards with every search



Definition & Overview Laser Direct Imaging (LDI) is an advanced PCB manufacturing technology that uses high-precision lasers to directly expose photoresist-coated boards without ...



Suchen Sie mit Microsoft Bing und nutzen Sie die Leistungsfähigkeit der KI, um Informationen zu finden, Webseiten, Bilder, Videos, Karten und mehr zu erkunden. Eine intelligente Suchmaschine für immer ...



Search with Microsoft Bing and use the power of AI to find information, explore webpages, images, videos, maps, and more. A smart search engine for the forever curious.



Search smarter with Microsoft Bing, an AI-powered search engine for finding information, exploring media, and navigating maps.



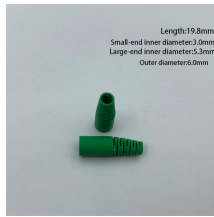
Zoek met Microsoft Bing, gebruik AI om informatie te vinden en ontdek webpagina's, afbeeldingen, video's, kaarten en meer. Een slimme zoekmachine voor nieuwsgierige mensen.



The LDI is a multiline, solid-state laser illuminator offering up to 1000mW of output power per laser line via a multimode fiber at the price of a low power LED light engine.



With feedback controlled output stability and up to a 100:1 linear dynamic range, the LDI is the ideal light source for quantitative imaging, ratiometric imaging, and more repeatable optogenetics experiments. ...



We have over 15 years of experience with Lasers. We offer professional OEM& ODM service for laser modules from 375nm to 1064nm!



LDI is an advanced technology that uses a computer-controlled laser beam to directly expose circuit patterns onto a PCB substrate coated with photosensitive material. This method offers ...



News from world, national, and local news sources, organized to give you in-depth news coverage of sports, entertainment, business, politics, weather, and more.



Enter Laser Direct Imaging (LDI): a game-changing technology that uses high-power lasers to etch circuit patterns directly onto PCBs, eliminating the need for physical masks and ...



This article explains how LDI laser technology is replacing traditional film for PCB manufacturing, offering superior precision, speed, and accuracy essential for high-density boards.



The LDI is a multiline, solid-state laser illuminator offering up to 1000mW of output power via a multimode fiber at the price of a low power LED light engine.



With feedback controlled output stability and up to a 100:1 linear dynamic range, the LDI is the ideal light source for quantitative imaging, ratiometric imaging, and more repeatable optogenetics experiments. ...

## Contact Us

For more information, pricing, or custom data center solutions, please contact us:

Website: <https://yoahorroenergia.es>

Email: [hello@yoahorroenergia.es](mailto:hello@yoahorroenergia.es)

Phone: +233 54 318 7269

Address: Plot 28, Spintex Road, Accra, Greater Accra, Ghana

This document is for informational purposes only. Specifications subject to change without notice.

