

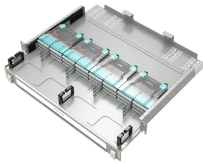
## Layer 1 Core Switch



## Layer 1 Core Switch



A: A core switch is a network switch that works mainly on the core layer of the network switch hierarchy. This layer serves as the backbone of data circulation in the network.



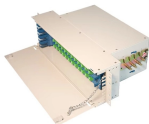
Positioned at the top of the three-layer network architecture, it functions like a senior management team in an organization, tasked primarily with efficiently routing data from the ...



Think of a core switch as the high-speed interstate highway of your network. It does not inspect the cargo or check driver's licenses; its sole mandate is to move massive amounts of traffic ...



Discover the key differences between core switches and ordinary switches. Learn how core switches enhance network reliability, scalability, and performance for data centers with advanced features like ...



It is a powerful backbone switch in the center of the network core layer, which centralizes multiple aggregation switches to the core and implements LAN routing.



Explore what a core switch does, why it's essential for enterprise networks, and how to choose the right model. Includes real-world applications and Cisco/Huawei/Aruba model comparison.



The Core Layer, where the core switch resides, sits at the top of this hierarchy. Its sole function is high-speed, high-capacity transport, specifically interconnecting all the distribution layer ...



What is a Core Switch? A core switch is the primary switch installed at the backbone of a layered or hierarchical network. These data switches are responsible for routing and data switching at the core ...



Discover the key differences between core switches and ordinary switches. Learn how core switches enhance network reliability, scalability, and performance for ...



This guide serves as an introduction to Layer 1 switching, explaining in layman's terms the OSI model, the functionality of crosspoint switches, the concept of latency, clock and data recovery as well as ...



Unlike access switches, which connect directly to end-user devices, the core switch focuses on aggregating and routing traffic between other switches, minimizing latency and ...

## Contact Us

For more information, pricing, or custom data center solutions, please contact us:

Website: <https://yoahorroenergia.es>

Email: [hello@yoahorroenergia.es](mailto:hello@yoahorroenergia.es)

Phone: +233 54 318 7269

Address: Plot 28, Spintex Road, Accra, Greater Accra, Ghana

This document is for informational purposes only. Specifications subject to change without notice.

