

## Location of patch panel and cable management rack



## Location of patch panel and cable management rack



Check the completeness of the patch panel, accessories (including the jumper rack, cable loop, switch, etc.) and decide where to place them. Ideally, use a schematic or a drawing to plan in ...



Poor patch panel cable management doesn't just make racks look messy — it silently drains operational budgets through extended MTTR (Mean Time To Repair), thermal inefficiency, ...



In data centers, top-of-rack switches (ToR) can be used as patch panels by connecting devices within the same rack. They help organize network cables and make connections better.



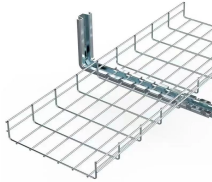
Based on patch panel or switch placement inside the server rack, route cables sequentially from topmost patch panels downward. Position cables for each patch panel using a cable organizer.



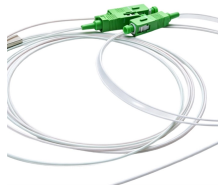
Our guide delivers actionable, step-by-step best practices for rack layout, cable management, and patch panel installation. Following these steps helps you build a clean and ...



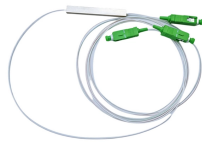
By mastering the art of patch panel and rack installation, you'll not only conquer cable chaos but also pave the way for a streamlined, efficient, and future-proof network infrastructure.



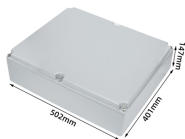
Check the completeness of the patch panel, accessories (including the jumper rack, cable loop, switch, etc.) and decide where to place them. Ideally, ...



The cable manager should be installed at the top or side of the rack to optimize the cable organization space, while the patch panel should be positioned at the front for easy access to the ...



Page 152 Figure 62: Typical DWDM Equipment Layout in an ONS 15454 ANSI Rack If you are installing a patch-panel or fiber-storage tray below the ONS 15454 shelf, you must install the air ramp between ...



Patch panels are one of the best ways to manage an expansive local area network (LAN) by providing quick and easy access to the ports and connections that connect them altogether. They ...



By mastering the art of patch panel and rack installation, you'll not only conquer cable chaos but also pave the way for a streamlined, efficient, and ...



Labeling Standards Follow ANSI/TIA-606-B standards for consistent labeling across installations. Use identifiers that include rack location, panel position, and port number—for example, ...

## Contact Us

For more information, pricing, or custom data center solutions, please contact us:

Website: <https://yoahorroenergia.es>

Email: [hello@yoahorroenergia.es](mailto:hello@yoahorroenergia.es)

Phone: +233 54 318 7269

Address: Plot 28, Spintex Road, Accra, Greater Accra, Ghana

This document is for informational purposes only. Specifications subject to change without notice.

