

Lower deviation of cable tray thickness



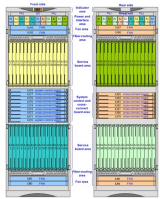
Overview

Industrial Power Plant: Requires heavy-duty trays, 2. 5–3 mm thick with widths up to 1000 mm, capable of holding multiple layers of power cables. Our Cable Tray Design Considerations Guide details key factors to consider when designing cable tray systems for industrial and commercial applications. It also demonstrates how Eaton's solutions and services can help: As an industry leader in cable tray, Eaton offers one of the widest ranges of. In practice, cable tray dimensions are a system of interrelated measurements—width, depth, length, and material thickness—that directly affect cable fill compliance, heat dissipation, structural loading, and long-term expandability. From an engineering standpoint, cable tray dimensions are not. ect the minimum bend ra-dius for cables as they exit the bottom of the cable tray. NEC cable tray sizing follows Article 392, which specifies: IEC cable tray sizes (IEC 61537) provide European standards for: Load capacity increases with tray. The right cable tray sizing calculator helps engineers turn cable schedules into a verified tray width and fill check before material ordering and site installation. The thickness of steel tray is 1.

Lower deviation of cable tray thickness



When vertically stacking ladder trays always maintain adequate clearance above each tray run to allow for the installation of the cable and start with the narrowest (lightest) tray on top and work downwards ...



The right cable tray sizing calculator helps engineers turn cable schedules into a verified tray width and fill check before material ordering and site installation.



If it has excellent electrical continuity and is integrated in the installation's equipotential bonding system, a metal cable tray reduces the coupling's impact and thus contributes to good EMC of the electrical ...



Cable Tray Technical Guide A practical guide to product selection and installation This guide for engineers and installers has been developed by ABB as a practical reference regarding cable tray ...



Explore standard sizes by tray type, understand width and depth limits, and see how to calculate and choose compliant cable tray sizes for real projects.



Our wind certification report provides you with list of acceptable B-Line series cable tray supports, fittings and covers based off of the environmental conditions, cable loading, and type of cable tray in your ...



Explore standard sizes by tray type, understand width and depth limits, and see how to calculate and choose compliant cable tray sizes for real projects.



This guide consolidates the key dimensions across all four NEMA cable ladder size classes based on the provided product specifications.



Complete cable tray sizing guide with standard size chart, NEC calculation methods, and real engineering examples. Learn how to select the right cable tray dimensions for your project.



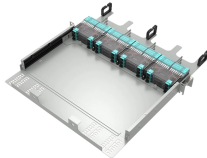
2013 standard requires that the width of steel bridge is less than or equal to 150mm, the minimum thickness deviation of pallet and cover can not be less than 1.0mm, the width of steel ...



However, selecting the correct thickness and width of a cable tray is essential to maximize performance, avoid safety hazards, and minimize costs. This article explains the key ...



The gauge or thickness of the material used to fabricate cable trays significantly affects both structural performance and actual electrical cable tray dimensions.



Use this cable tray sizing calculator to check fill %, select tray size, and comply with IEC 61537 & NEC 392 with formulas, example and checklist.

Contact Us

For more information, pricing, or custom data center solutions, please contact us:

Website: <https://yoahorroenergia.es>

Email: hello@yoahorroenergia.es

Phone: +233 54 318 7269

Address: Plot 28, Spintex Road, Accra, Greater Accra, Ghana

This document is for informational purposes only. Specifications subject to change without notice.

