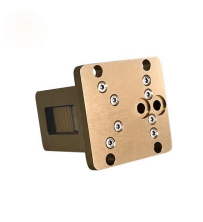


## Main switch of explosion-proof distribution box door



## Main switch of explosion-proof distribution box door



Crafted from high-quality materials, the enclosure features a robust main structure, a beautifully clear door, a secure seal, and durable included hardware for added convenience and reliability.



To prevent arcing of enclosed switch from causing ignition of a specific hazardous atmosphere, or atmospheres, external to the enclosure.



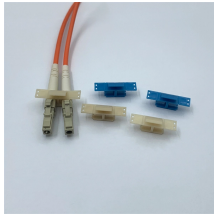
·Equipped with specialized hinge structure, which can prevent the flameproof joints from damage when opening and closing the box, and greatly prolong the service life of box. The boxes can be combined ...



Explosion Protection to EN, IEC. Can be used in Zone 1,2,21,22 ...



Explosion Protection to EN, IEC. Can be used in Zone 1,2,21,22 Class I, Zone 1,2 Division 1, Groups C, D Flameproof enclosure (Ex d IIB)The main switch and branch switch are operated with the external ...



Enclosure for modular combination (Ex e). Main switch and branch switch are operated with external rotary actuator. Internal wiring to the terminal is complete. International brand of explosion-proof ...



Circuit breakers, AC contactors, thermal relays, surge protectors, universal change-over switches, fuses, transformers, electricity meters and other electrical components can be installed according to user ...



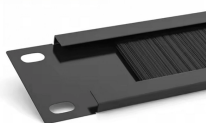
EDS Series switches do not need external sealing. The switches are enclosed in a unique sealing well with double flanges which mate with nsu Coverst General use snap switch front operated and ...



This product is combined with flame-proof cavity and an increased safety cavity, the branch switch and the main switch are operated by the operating handle on the panel.



Enclosure for modular combination (Ex e). Main switch and branch switch are operated with external rotary actuator. Internal wiring to the terminal is complete. ...



With the ability to provide QUAD labeling for UL, CSA, ATEX and IEC Ex d requirements, this series of disconnect switches is suitable for world wide applications. These switches provide protection in ...



As a preferred solution of the explosion-proof and flame-retardant distribution box, the second door has a rectangular shape, a second handle is connected to the second door, and one side...

## Contact Us

For more information, pricing, or custom data center solutions, please contact us:

Website: <https://yoahorroenergia.es>

Email: [hello@yoahorroenergia.es](mailto:hello@yoahorroenergia.es)

Phone: +233 54 318 7269

Address: Plot 28, Spintex Road, Accra, Greater Accra, Ghana

This document is for informational purposes only. Specifications subject to change without notice.

