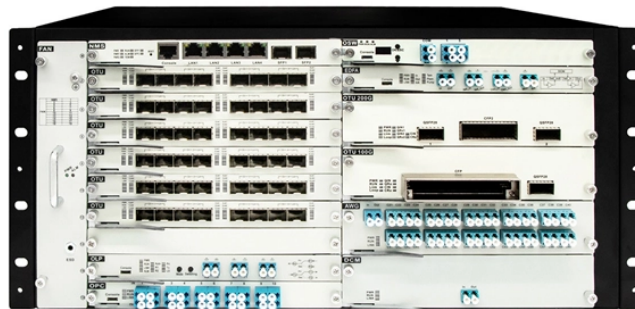


Maximum size of optical module in GB



Overview

The QSFP28 specification (SFF-8665) defines the mechanical, electrical, and signaling interface for pluggable transceivers supporting up to 4x25G lanes — a total throughput of 100G. The OSFP has been broadly accepted for 400G (with 8x50 Gb/s host interface) and for 800G (8x100 Gb/s host interface) pluggable optics. OSFP1600 carefully pushes the limits required. Broadcom's Optical Module PHY portfolio spans multiple technology nodes — 16nm, 7nm and now 5nm, with data rates from 100 Gbs to 1. Comprising five flagship platforms, Centenario, Jesko, Portofino, Gemera, and Cygnus, Broadcom's DSP PAM-4 portfolio covers 100G, 400G, 800G, and 1.6T PMDs. The Cisco® OSFP 800G transceiver modules provide 800 Gigabit Ethernet (GE), 2x 400GE, 4x 200GE, and 8x 100GE connectivity options, complying with the Octal Small Form Factor Pluggable (OSFP) MSA for pluggable transceivers. Optical interoperability with 100GbE CFP, CFP2 and CPAK Arista's Optical Modules and Cable portfolio offer a wide. Webex spaces will be moderated by the speaker until June 7, 2024. Power Consumption CLASS 1 LASER PRODUCT, IEC/EN 60825-1:2014 Do not look into the ends of the fiber optic cable or SFP module while converters are.

Maximum size of optical module in GB



For a complete listing of hardware compatible with these modules, see the Extreme Optics Compatibility website. Transmission distances are provided as a nominal guide only.



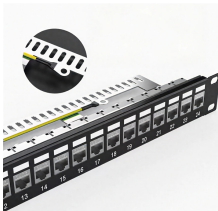
There are no market forecasts yet for 1600G modules, but one can expect a fast ramp once 1600G modules are being adopted by large cloud service providers. Similar to the 800G case, the majority ...



Optical signals are carried over eight pairs of parallel lanes, with one wavelength per lane. The optical interface can interoperate with any IEEE-compliant module regardless of the form factor.



Each module is optimized for different media and reach (ranging from 0.5 meters to 80 kilometers). All interface speeds, from 1G to 400GE have connectivity options that include Direct Attach copper ...



The module also can be configured via software control for half-rate operation as a 400G (400GbE, 2x200GbE breakout, or 8x50GbE breakout) optical transceiver for applications that require ...



Choosing the wrong module can lead to costly mismatches, link instability, or wasted budget. This guide provides a clear, practical comparison among the most common transceiver types ...



Broadcom's Active Copper PHY portfolio enables DAC cable providers to build very low insertion-loss profile, ultra-low latency, ultra-low power cables for 100G/400G/800G/1.6T hyperscale/AI networks ...



High-Speed Interconnects: Backend network requires high speed 100G/200G or 800G optics to connect servers and network switches. These high bandwidth connections are essential for handling the data ...



Among the many optical form factors, QSFP28 (Quad Small Form Factor Pluggable 28) has emerged as the industry workhorse for 100 Gigabit Ethernet (100GbE) networks.



SFP+ transceiver that supports 10G connections up to 300 m using multi-mode fiber with a duplex LC UPC connector.

Contact Us

For more information, pricing, or custom data center solutions, please contact us:

Website: <https://yoahorroenergia.es>

Email: hello@yoahorroenergia.es

Phone: +233 54 318 7269

Address: Plot 28, Spintex Road, Accra, Greater Accra, Ghana

This document is for informational purposes only. Specifications subject to change without notice.

