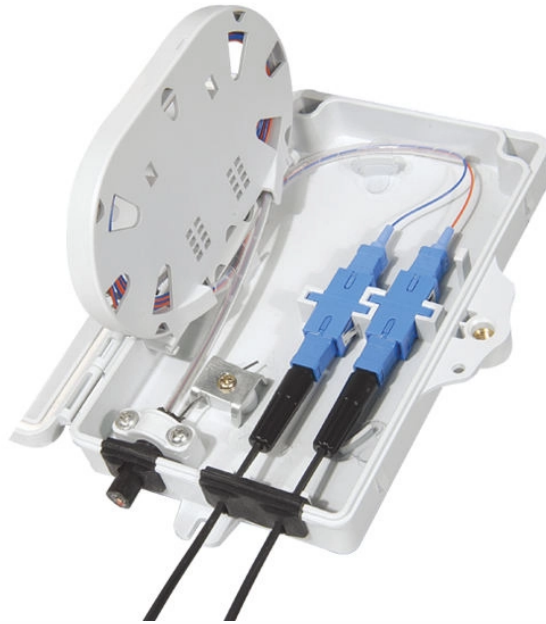


Methods for hoisting rail cable trays



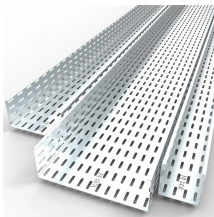
Methods for hoisting rail cable trays



It describes the different types of cable trays, including ladder, solid bottom, trough, channel, wire mesh, and single rail trays. It also covers cable tray installation steps like marking, cutting, drilling and ...



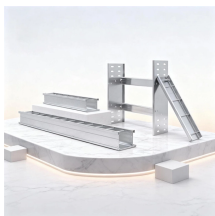
The purpose of this article is to define the sequence and methodology for the installation of electrical cable trays, cable trunking, cable raceways and boxes, junction and pull boxes.



When fitting cable trays and their accessories, the products are cut on site to create changes of direction, adjust sections, etc. Damage can also occur during handling; as a result, both the ...



A properly designed and installed cable tray system will provide outstanding reliability for a facility's control, communication, data, instrumentation and power systems cabling & wiring. However, if cable ...



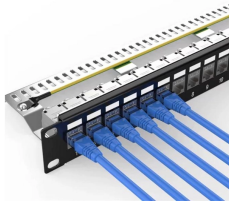
It describes the different types of cable trays, including ladder, solid bottom, ...



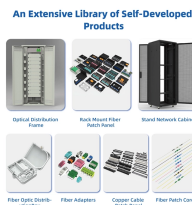
Review the proper methods for safely installing, maintaining and inspecting electrical cable trays; Provide information regarding the hazards of overloaded cable trays;



Discover the best fixing and mounting options for cable trays and wire mesh basket trays. CMW shares tips for efficient cable management.



This guide covers the critical steps, from selecting the right electrical cable tray and performing accurate cable fill calculations to managing a safe cable pull through and ensuring all bonding and grounding ...



This method statement covers the site installation of the cable tray & ladders and the requirements of checks to be carried out.



Below is a complete method statement for installation of cable tray, cable trunking and cable ladders in compliance with project specifications and approved material submittals. Tool Required: Port...



This publication is intended as a practical guide for the proper and safe* installation of cable ladder systems, cable tray systems, channel support systems and associated supports.

Contact Us

For more information, pricing, or custom data center solutions, please contact us:

Website: <https://yoahorroenergia.es>

Email: hello@yoahorroenergia.es

Phone: +233 54 318 7269

Address: Plot 28, Spintex Road, Accra, Greater Accra, Ghana

This document is for informational purposes only. Specifications subject to change without notice.

