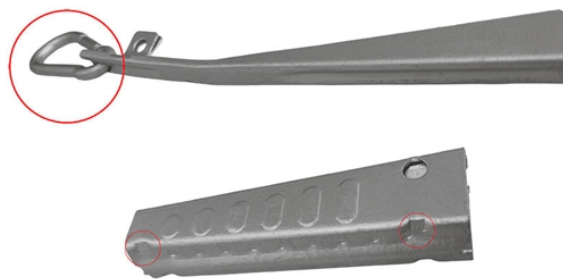


Minimum cable for entering the distribution box



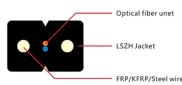
Overview

The wiring method used determines which cables appear inside boxes. Regardless of the wiring method, box fill calculations apply equally to. When installing insulated conductors of 4 AWG or larger, the minimum dimensions of pull or junction boxes installed in a raceway or cable run must comply with 314. It takes the incoming power and safely distributes it to different circuits throughout your building. However, the key to. Article 300 contains the general requirements for wiring methods and materials for power and lighting [300. You must count each conductor, device, and clamp inside the box to follow code requirements. The box capacity table shown (page A-5) is reproduced in part from the NEC® as a quick reference and.

Minimum cable for entering the distribution box



Define minimum. minimum synonyms, minimum pronunciation, minimum translation, English dictionary definition of minimum. n. pl. min·i·mums or min·i·ma 1. a. The least possible quantity or degree. b. ...



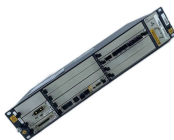
Minimum Official Webshop | +1000 styles online for men and women Quick delivery High quality Scandinavian fashion. Shop online.



In May 2019, nationwide, the average minimum-wage worker earned \$11.80 per hour; this was the highest it had been since at least 1994, the earliest year for which effective-minimum-wage data are ...



Read the information on who is entitled to the minimum wage. You can use the minimum wage calculator to check whether the National Minimum Wage or National Living Wage is being paid.



They made the repairs with minimum [= minimal] disruption to the schedule. What are the minimum requirements for the job? The minimum sentence for her crime is 10 years.



Each wire coming into the box and connecting to a device counts as one wire of that size. Where devices are mounted in the box, the total conductor count must be increased by two for each ...



These rules define when you must install a box, how large it must be, how you must install it, and how inspectors evaluate compliance. This guide ...



Wires in the junction box depend on the box size, wire gauge, and code rules. For example, a 4x4 inch box often holds up to 10 wires if you use 14-gauge conductors.



From the socket, each cable has to extend a minimum of 6 inches. This provides adequate slack to secure the splices and connections tightly, allowing for the necessary movements ...



The code specifies the minimum box size you will need for different wire sizes and the minimum volume size of the box required for different numbers of conductors.



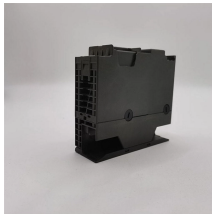
It includes the general requirements for all wiring methods included in the NEC, but does not apply to twisted-pair cable and coaxial cable (covered in Chapters 7 and 8) unless Article 300 is specifically ...



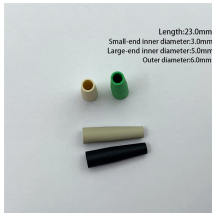
Learn how to install a distribution box safely and correctly. Covers wiring, placement, standards, and expert tips for a compliant setup.



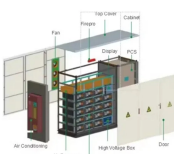
(3) Support Fittings Fill. Where one or more luminaire studs or hickies are present in the box, a single volume allowance in accordance with Table 314.16(B) shall be made for each type of fitting based on ...



The meaning of MINIMUM is the least quantity assignable, admissible, or possible. How to use minimum in a sentence.



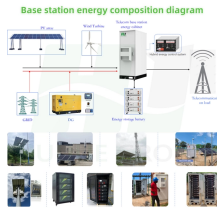
MINIMUM definition: the least quantity or amount possible, assignable, allowable, or the like. See examples of minimum used in a sentence.



The wiring method used determines which cables appear inside boxes. In residential work, NM-B cable is most common, but other wiring methods may be present if these are not ...



From the socket, each cable has to extend a minimum of 6 inches. This provides adequate slack to secure the splices and connections tightly, ...



Introduction Understanding The Components of A Distribution Box Selecting The Right Distribution Box Site Preparation and Location Requirements Electrical Connections and Wiring Compliance with Standards and Regulations Conclusion What Is a Distribution Box? A distribution box, also known as a power distribution unit, is a critical component in any electrical system. It takes the electrical power coming into the building and distributes it to different circuits. Each circuit then powers various device... Why Proper Installation Matters Installing a distribution box correctly is about more than just making sure the lights turn on. It's about safety, efficiency, and reliability. A poorly installed distribution box can lead to a host of problems. These include electrical fires, short circuits, and even complete power failures. Proper installation ensures tha... See more on eabel Published: Feb 7, 2025 Mike Holt Enterprises



These rules define when you must install a box, how large it must be, how you must install it, and how inspectors evaluate compliance. This guide breaks down the actual rules inspectors ...



The minimum is the lowest or smallest amount possible or acceptable. If you do the minimum amount of work at your job, you might not get fired — but you definitely won't get promoted.



MINIMUM definition: 1. the smallest amount or number allowed or possible: 2. used to describe something that is the.... Learn more.



If you say that something is a particular amount minimum, you mean that this is the smallest amount it should be or could possibly be, although a larger amount is acceptable or very possible.



Use the angle pull image to help answer the question. When installing insulated conductors of 4 AWG or larger, the minimum dimensions of pull or junction boxes installed in a raceway or cable run must ...



Use the angle pull image to help answer the question. When installing insulated conductors of 4 AWG or larger, the minimum dimensions of pull or junction boxes ...

Contact Us

For more information, pricing, or custom data center solutions, please contact us:

Website: <https://yoahorroenergia.es>

Email: hello@yoahorroenergia.es

Phone: +233 54 318 7269

Address: Plot 28, Spintex Road, Accra, Greater Accra, Ghana

This document is for informational purposes only. Specifications subject to change without notice.

