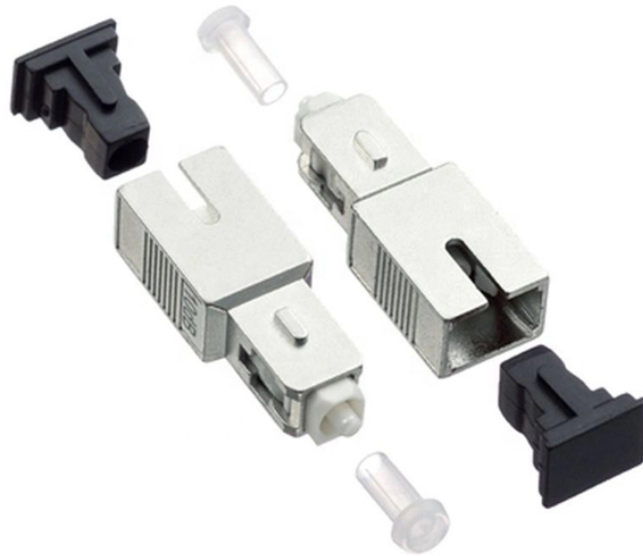


# No light is emitted after the optical module is plugged in



## Overview

The solution is to unplug the fiber and reinsert it into the SFP module interface until a “click” sound is heard, indicating the fiber connector and SFP module are properly connected. Contamination or damage on the fiber end face requires the use of a fiber end-face. Before troubleshooting the issue, please look at our 16 tips for troubleshooting your optical transceiver connections. When the connection does not work as expected after we set it up according to the Installation Guide, we need to do some troubleshooting. I noticed something odd with a fiber SFP module. When it's plugged in, there's no light visible from the transmitter. To compare, I checked another working SFP — the TX light is visible immediately, and the RX/TX power levels look. This type of optical module failure mainly includes port not UP, port status is UP but do not receive or send messages, port frequently up or down and CRC error.

## No light is emitted after the optical module is plugged in



When it's plugged in, there's no light visible from the transmitter. But if I unplug it and then plug it back in, the light appears. To compare, I checked another working SFP — the TX light is ...



The first thing you should do is re-plug the optical module into the switch slot and make sure it is firmly inserted. If the problem persists, please check the compatibility of the optical module ...



Based on typical issues encountered with optical modules in daily switch applications, this document summarizes basic troubleshooting steps for resolving common faults:



First, check whether the status of the optical port is on, and then check whether the optical module parameters of both ends are matched (such as wavelength, speed, and transmission ...



If the Tx port of the SFP module does not emit a red laser when plugged into the SFP slot, the SFP module or the SFP slot may be defective. It is advised to change to another SFP ...



Use an optical power meter to test the receive power of the port and check whether the optical fiber is disconnected. Use one optical fiber to form a loop on the port to check whether the port goes Up. If ...



In this article, we will focus on teaching you how to troubleshoot and solve the common three categories of optical module failure. First, the transmission class of the optical module fault ...



This article is intended to provide a basic understanding and layer 1 troubleshooting steps in the event the case links do not come ON-LINE while using small form-factor pluggable (SFP) modules.



Learn how to troubleshoot common SFP module issues including physical faults, hardware damage, compatibility, and configuration errors. This guide provides step-by-step solutions to maintain ...



Have you ever experienced an unexpected network outage due to the failure of an SFP/SFP+ optical transceiver?

## Contact Us

For more information, pricing, or custom data center solutions, please contact us:

Website: <https://yoahorroenergia.es>

Email: [hello@yoahorroenergia.es](mailto:hello@yoahorroenergia.es)

Phone: +233 54 318 7269

Address: Plot 28, Spintex Road, Accra, Greater Accra, Ghana

This document is for informational purposes only. Specifications subject to change without notice.

