

OLT has no optical module



Overview

An Optical Line Terminal (OLT) is the central endpoint hardware in a PON architecture. Positioned in the Service Provider's Central Office (CO), it acts as the interface between the core network (the Internet) and the end-users. In addition, the transmission between OLT and ONU/ONT adopts an optical. An optical line termination (OLT), also called an optical line terminal, is a device which serves as the service provider endpoint of a passive optical network. At present, it is mainly divided into Class B+ and Class C+, and the optical power range on the ONU side is generally 1-2 dbm less than that on the OLT. In the age of fiber-to-the-home (FTTH) and ultra-broadband connectivity, the Optical Line Terminal - or OLT - is one of the most crucial devices powering our high-speed digital world. If you are building a Fiber-to-the-Home (FTTH) or Fiber-to-the-Business (FTTB) network, understanding the OLT is critical for ensuring high-speed, reliable.

OLT has no optical module



Explore what an OLT (Optical Line Terminal) is, its role in FTTH networks, and a detailed comparison between market leaders Huawei and ZTE OLT series.



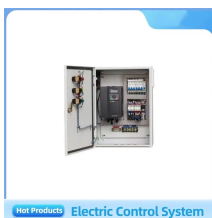
In short: The OLT (Optical Line Terminal) is the central control unit of a Passive Optical Network (PON). It converts data signals, manages bandwidth, and connects hundreds of users over ...



ONU and OLT are both optical transmission network connection equipment. OLT is an optical line terminal, and ONU is an optical network unit (ONU). There are many types of ONU and ...



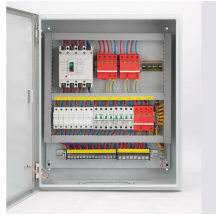
OLT stands for Optical Line Terminal and sometime also called Optical Line Termination. It is one rack unit device, used in GPON. It is installed at Central Office or Head office of the service provider. ...



The GPON OLT Stick condenses the functionality of a full OLT into a single SFP-form-factor optical module. This breakthrough represents a major leap in both chip integration and virtualization ...



The optical indicators of each level are different. At present, it is mainly divided into Class B+ and Class C+, and the optical power range on the ONU side is generally ...



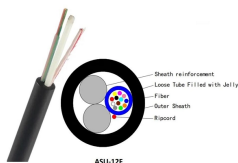
No, an ONT cannot work without an OLT in a Passive Optical Network. The OLT serves as the central control unit, managing data distribution from the ISP's backbone network to multiple ...



1. Spectrum The most important component is the beam splitter. An optical distribution network (ODN) mainly has primary splitting and secondary splitting, or centralized splitting and ...



An optical line termination (OLT), also called an optical line terminal, is a device which serves as the service provider endpoint of a passive optical network. It provides two main functions: 1. to perform conversion between the electrical signals used by the service provider's equipment and the fiber optic signals used by the passive optical network.



The optical indicators of each level are different. At present, it is mainly divided into Class B+ and Class C+, and the optical power range on the ONU side is generally 1-2 dbm less than that on the OLT side.

