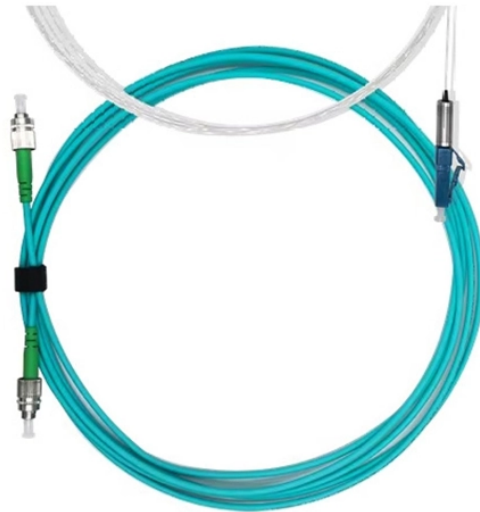


# ONU optical module wavelength



## Overview

Wavelengths range from 1290 - 1330 nm in the upstream direction and from 1480 - 1500 nm in the downstream direction. Data is broadcast in the downstream direction, and in the upstream direction data is burst in TDMA mode (based on timeslots). Supports point-to-multipoint (P2MP). A GPON optical module is a transceiver used in GPON networks to convert electrical signals into optical signals and vice versa. These modules are typically installed in Optical Line Terminals (OLTs) at the service provider's central office and Optical Network Units (ONUs) or Optical Network. GPON adopts WDM to transmit data of different upstream/downstream wavelengths over the same ODN. An integrated WDM coupler can separate 1577nm input light and 1270nm output light. The metallic package guarantees excellent EMI and EMC. Max. 5 Gbps and upstream speeds of 1.25 Gbps, offering high bandwidth for demanding applications.

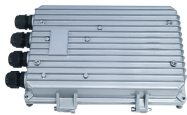
## ONU optical module wavelength



Varied distance between each ONU/ONT and OLT results in optical signal attenuation. As a result, power and level of packets received by an OLT vary in different time slots.



8472 ITU-T G.9807.1 Ordering Information The XGS-PON ONU Transceiver is designed for 10G XGS-PON transmission. The module incorporates 10Gb/s 1270nm burst-mode transmitter, and 10Gb/s ...



1490nm continuous-mode receiver with APD-TIA 2-wire interface for integrated digital diagnostic Monitoring Transmitter state indication (TX\_SD) SFP package with SC/UPC receptacle optical ...



This wavelength allocation is specified in industry standards to deploy lower-cost optical components on the multi-point ONU side, reducing overall PON network deployment costs.



NetEngine A821 E V800R023C10SPC500 Hardware Description GPON ONU SFP Optical Module GPON ONU-SFP-SMF-1490nm (rx)/1310nm (tx)-20km-industry



A GPON optical network unit with a 2.5 GbE port that delivers 1.2 Gbps uplink / 2.5 Gbps downlink speeds at distances up to 20 km.

DATA ADJUSTABLE, EASY TO USE



In this blog post, we'll provide an introduction to GPON optical modules and explore the key classification standards that define their performance and compatibility.



Follow guidelines according to proper ESD procedures. Laser Safety: Radiation emitted by laser devices can be dangerous to human eyes. Avoid eye exposure to direct or indirect radiation. All information ...



Operating wavelength is another key factor; for instance, GPON uses 1490nm for downstream and 1310nm for upstream. The sensitivity of the receiver, measured in dBm, determines how weak an ...



A GPON SFP module transmits and receives signals of different wavelengths between the OLT at the Central Office side and the ONT at the end users side. GPON SFPs utilize both the ...

## Contact Us

For more information, pricing, or custom data center solutions, please contact us:

Website: <https://yoahorroenergia.es>

Email: [hello@yoahorroenergia.es](mailto:hello@yoahorroenergia.es)

Phone: +233 54 318 7269

Address: Plot 28, Spintex Road, Accra, Greater Accra, Ghana

This document is for informational purposes only. Specifications subject to change without notice.

