

# Online modification of fiber optic switch zones



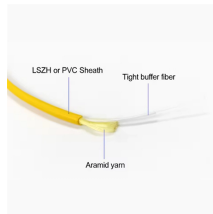
## Overview

In this article, you will learn how to configure zoning in a fibre channel SAN using two methods: port zoning and WWN zoning. Experts who add quality contributions will have a chance to be featured. Port zoning is based on the physical ports of the switches and the devices in the SAN. A zone can be included in more than one zone configuration. By default, the window is displayed. The approach of the solutions offered is to support the customer in every phase involving any structure that. Fibre Channel zoning allows you to partition the Fibre Channel fabric into one or more zones. Drag the fiber edge or the. Our fiber optic network management software helps you build and view your OSP network by mapping and managing fiber optic infrastructure, including fiber cables, conduits, buildings, towers, poles, splice trays, manholes, handholes and patch panels. Please confirm (y/n): y Alarm Msg: [Sat.

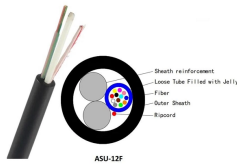
## Online modification of fiber optic switch zones



This list covers the most commonly used Cisco MDS show commands for SAN switch management, troubleshooting, zoning, performance monitoring, and high availability.



In each VSAN that has been enabled for Fibre Channel zoning, Cisco UCS Manager automatically configures one zone set and multiple zones. The zone membership specifies the set of initiators and ...



This page shows how to modernize CLS fiber management with a robotic CLS fiber switch and integrated network management, pairing rack-scale density with the security and auditability your ...



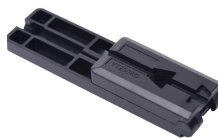
Our fiber optic network management software helps you build and view your OSP network by mapping and managing fiber optic infrastructure, including fiber cables, conduits, buildings, towers, poles, ...



You can activate or deactivate a zone set using the switch CLI (command-line interface) or a management software. You can also use aliases to simplify the naming and grouping of zone members.



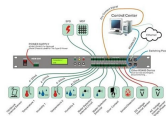
Different Zone Sets may be created for different Fabric configurations For example: one Zone Set for normal operation, and another Zone Set for backup operations



Introducing our advanced Fiber to the Home, FTTH software solution, a comprehensive tool designed to streamline the entire process of designing, building, and commissioning fiber optic networks.



FC Switch (admin-config) #> config save The config named default has been saved. SN6000 FC Switch (admin) #> config activate The currently active configuration will be activated.



To modify an active zone configuration, you must clone the zone configuration with a different name. To modify an existing zone configuration, perform the following steps:



IDE for creating fiber-optic schemes. Contribute to ef-end-y/freeroptic development by creating an account on GitHub.

## Contact Us

For more information, pricing, or custom data center solutions, please contact us:

Website: <https://yoahorroenergia.es>

Email: [hello@yoahorroenergia.es](mailto:hello@yoahorroenergia.es)

Phone: +233 54 318 7269

Address: Plot 28, Spintex Road, Accra, Greater Accra, Ghana

This document is for informational purposes only. Specifications subject to change without notice.

