

Optical Module Switch 2 Optical 4 Electrical Gigabit



Optical Module Switch 2 Optical 4 Electrical Gigabit



It provides IPv6/IPv4 dual stack management and built-in L2/L4 Gigabit switching engine along with 4 10/100/1000BASE-T ports featuring 30-watt 802.3at PoE+, 4 ...



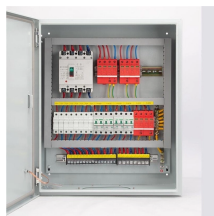
BL167GM-SFP is a managed industrial Ethernet switch with 2 Gigabit SFP and 4 ...




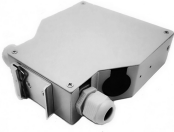




In order to meet the different requirements of industrial applications, this series adopts a modular design, up to 2 Gigabit optical fiber ports and 4 Gigabit Ethernet electrical ports, which enhances the ...

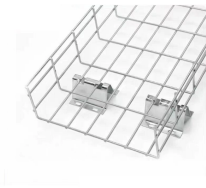


BL167GM-SFP is a managed industrial Ethernet switch with 2 Gigabit SFP and 4 Gigabit RJ45 ports, compliant with FCC, CE, and RoHS. It supports key Layer 2 protocols for stable communication, ...



4 Gigabit electrical ports + 2 Gigabit FX optical ports industrial Ethernet switch, supporting 4 100Base-T/1000Base-TX electrical ports and 2 1000Base-X optical ports. Products comply with FCC, CE, ...

	<p>BL167GM-SFP is a network managed industrial Ethernet switch that complies with ...</p>
	<p>BL167GM-SFP is a network managed industrial Ethernet switch that complies with FCC, CE and RoHS standards. Support 2 gigabit optical ports and 4 gigabit electrical ports; Support Ethernet layer 2 ...</p>
	<p>The QLD24G industrial Ethernet switch features 4 Gigabit electrical ports and 2 Gigabit FX optical ports, providing high-quality and reliable networking. This switch supports 100Base-T/1000Base-TX ...</p>
	<p>It can convert Optical Electric Ethernet signals between 10/100/1000M UTP ports and 1000M optical fiber ports and switch Ethernet signals between port and port.</p>
	<p>4 gigabit electrical port +2 gigabit FX optical port industrial Ethernet switch BL167G supports 4 10Base-T/100Base-T/1000Base-TX electrical port and 2 1000Base-X optical port. Products comply with FCC, ...</p>
	<p>It supports 4 electrical port device aggregation and dual optical port redundant transmission, meeting the diverse industrial communication needs from fixed links to flexible expansion.</p>



It provides IPv6/IPv4 dual stack management and built-in L2/L4 Gigabit switching engine along with 4 10/100/1000BASE-T ports featuring 30-watt 802.3at PoE+, 4 additional Gigabit copper ports and ...



FW104GS-2F is an industrial full gigabit management Ethernet switch, which supports APOLLO visual cloud management, operation and maintenance. The equipment can be managed, operated and ...

Contact Us

For more information, pricing, or custom data center solutions, please contact us:

Website: <https://yoahorroenergia.es>

Email: hello@yoahorroenergia.es

Phone: +233 54 318 7269

Address: Plot 28, Spintex Road, Accra, Greater Accra, Ghana

This document is for informational purposes only. Specifications subject to change without notice.

