

Optical Modules and Copper Interconnects



Optical Modules and Copper Interconnects



Co-Packaged Optics (CPO) has long promised to transform datacenter connectivity, but it has taken a long time for the technology to come to market, with tangible deployment-ready products ...



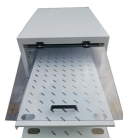
The SCALE CPO solution uses both coarse and dense wavelength-division multiplexing (CWDM and DWDM) for bi-directional data transmission over each optical fiber, delivering significant ...



Pluggable optical modules running on PAM4 DSPs have become fundamental for server-to-switch and switch-to-switch connectivity: the vast majority of connections from 5 meters to 2 ...



GlobalFoundries (Nasdaq: GFS) (GF) today announced the introduction of its SCALE™ optical module solution for co-packaged optics (CPO). GF's SCALE solution, or Silicon photonics Co-packaged ...



Whether your infrastructure relies on optical or copper interconnects, Semtech delivers the performance needed for AI workloads, cloud computing and enterprise networking.



NPO, or Near-Packaged Optics, is a highly integrated optical interconnect solution that falls between traditional pluggable optical modules and CPO.



The future of optical interconnects in electronic packages looks promising. With ongoing research and development, the challenges associated with their deployment are gradually being ...



Two common approaches—Direct Attach Copper (DAC) cables and Small Form-factor Pluggable (SFP) optical modules—offer distinct advantages and trade-offs. This article provides a ...



Future Proof FireFly™ copper and optical systems are interchangeable using the same high-performance connector set.



The UCle optical will redefine where copper is used. Copper remains a local-reach technology, optimized for in-package communication, while optics take over at package-to-package, ...

Contact Us

For more information, pricing, or custom data center solutions, please contact us:

Website: <https://yoahorroenergia.es>

Email: hello@yoahorroenergia.es

Phone: +233 54 318 7269

Address: Plot 28, Spintex Road, Accra, Greater Accra, Ghana

This document is for informational purposes only. Specifications subject to change without notice.

