

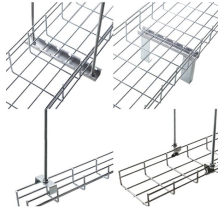
Optical module power supply disabled



Overview

Remove and reinstall the optical module. If the fault persists, collect log information and contact Huawei technical support personnel. The Amplifier Gain Low or High alarm is raised when the EDFA module cannot reach the gain setpoint. This condition occurs if the amplifier reaches its range boundaries. The device management or driver software has a bug. The module appears in "Ready" state and data path state is "DPActivated". State = Disable Supported Cable Speed (Ext.) = 0x00000000 () Compliance = Unspecified /. By default, Cisco switches perform authenticity validation on inserted optical modules. If a module is identified as non-Cisco original, the switch may shut down the port, trigger an alarm, or display a warning message. Cisco also provides hidden commands to allow the use of third-party optical. Anyone know does this error a concern or what command I can use on this platform to check the status 05-23-2022 05:47 AM 05-23-2022 04:15 PM Means the Rx (receive) of the optics is too "faint".

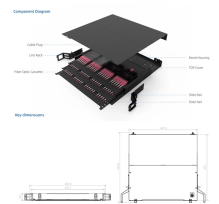
Optical module power supply disabled



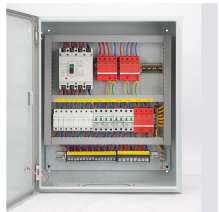
To further troubleshoot and clear this alarm, perform the following steps: Check the channel plan at the system level and verify if the OTS-OCH power levels of the amplifier meet the ...



Use an optical power meter to measure the transmit power of the optical module. If the transmit power of the optical module is not in the normal range, replace the optical module.



It seems no actual signal received if the power is below -30dBm . Does it mean that no data packets were received or incomplete packets on the interface (G0/0/0) ?



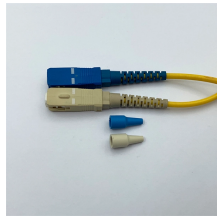
Remove and reinstall the optical module. If the fault persists, replace the optical module with a normal one of the same type to check whether the optical module is faulty. If the fault persists, collect log ...



If a module is identified as non-Cisco original, the switch may shut down the port, trigger an alarm, or display a warning message. Cisco also provides hidden commands to allow the use of ...



Check the patch cable, the fibre path and, finally, check the optics at both ends.



If the Tx port of the SFP module does not emit a red laser when plugged into the SFP slot, the SFP module or the SFP slot may be defective. It is advised to change to another SFP ...



For DS110DF111, it is followed by a 10G SFP optical module, but after repeated insertion and removal, the optical module cannot be used, and the link status is displayed down.



From the NIC side this behavior usually indicates that ConnectX-7 has detected the module as present but not compliant, so it intentionally keeps the port in low-power / disabled state ...



No communication with the module via I2C should be required, all you need to do is tie the RESETL pin high and the LPMODE pin low and the module should turn on and operate normally.

Contact Us

For more information, pricing, or custom data center solutions, please contact us:

Website: <https://yoahorroenergia.es>

Email: hello@yoahorroenergia.es

Phone: +233 54 318 7269

Address: Plot 28, Spintex Road, Accra, Greater Accra, Ghana

This document is for informational purposes only. Specifications subject to change without notice.

