

# Optical modules do not support switches



## Overview

Often, switches will not recognize SFP modules because they are not tightly connected, they are incompatible modules, or the switch firmware needs to be updated. In some cases, third-party modules will not be recognized unless the switch is configured. Based on typical issues encountered with optical modules in daily switch applications, this document summarizes basic troubleshooting steps for resolving common faults: 1. Check compatibility between the optical module and switch. Most switch brands have specific compatibility requirements. The term transceiver applies collectively to optical transceivers, DAC and AOC cables, and port adapters. The allow-unsupported-transceiver (UT-mode) command allows usage of non-Aruba/HPE transceiver products.

## Optical modules do not support switches



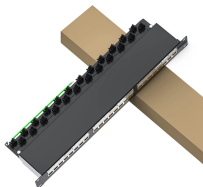
When establishing an optical connection, the core diameters on the transceiver of both communication partners must match. If two different fiber diameters are used, communication problems may occur ...



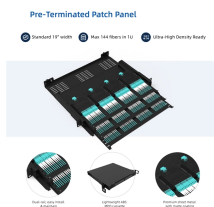
Non-OEM SFP modules may not necessarily adhere to the vendor's specifications, which could lead to the module not being detected, reduced performance, or the possibility of the ...



Due to the occasional incompatibility between certain brands of switches and optical modules from other suppliers, please ensure that your switch supports your optical module before formal operation.



Learn how to match SFP modules with your switch or media converter by checking compatibility, speed, fiber type, wavelength, and distance. A clear and practical guide.



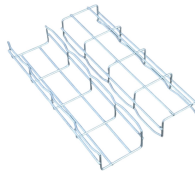
Will the modules be compatible and operate flawlessly on my switches? This article will lead you to figure out the interoperability and compatibility nature of the optical transceivers.



This document describes how to troubleshoot fiber optic interfaces by addressing some of the fiber optic module and cabling specifications.



This guide details products that are supported by a switch model or module. In some cases, a particular switch model or module may not have the proper hardware or software support to allow a transceiver ...



Based on typical issues encountered with optical modules in daily switch applications, this document summarizes basic troubleshooting steps for resolving common faults:



Switch not accepting your optical module? This guide explains common error messages, their real meanings, and step-by-step solutions to fix transceiver compatibility problems.



Some non-Huawei-certified switch optical modules are not designed in compliance with EMC standards and have low anti-interference capability. Additionally, they bring electromagnetic ...

## Contact Us

For more information, pricing, or custom data center solutions, please contact us:

Website: <https://yoahorroenergia.es>

Email: [hello@yoahorroenergia.es](mailto:hello@yoahorroenergia.es)

Phone: +233 54 318 7269

Address: Plot 28, Spintex Road, Accra, Greater Accra, Ghana

This document is for informational purposes only. Specifications subject to change without notice.

