

## Papua New Guinea Power Distribution Box Project



### Overview

The project will support the strengthening and expansion of the transmission and distribution system within the main power grids of PNG Power Limited (PPL) by (i) expanding and upgrading transmission lines and substations in Gazelle, Ramu, and Port Moresby; (ii) building new low-. The project will support the strengthening and expansion of the transmission and distribution system within the main power grids of PNG Power Limited (PPL) by (i) expanding and upgrading transmission lines and substations in Gazelle, Ramu, and Port Moresby; (ii) building new low-. The project will support the strengthening and expansion of the transmission and distribution system within the main power grids of PNG Power Limited (PPL) by (i) expanding and upgrading transmission lines and substations in Gazelle, Ramu, and Port Moresby; (ii) building new low- and medium-voltage. Can't find the product you need?

Please give us feedback Dongfeng-covering various types of distribution boxes\_rich and diverse product system, covering various types of distribution boxes and cabinet products. The scope of work include the following: Design

and engineering for the primary, secondary, civil, and ancillary system. Procurement, manufacturing, factory testing, project management, site supervision, installation, inspection, punch listing, cold and hot commissioning of the 66/11kV Power. At TAG Energy, we specialize in the design, installation, reconstruction, and maintenance of power distribution network systems.

## Papua New Guinea Power Distribution Box Project



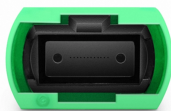
In the pilot stage, the PNG Power team identified and prioritized areas most affected by power theft. The company reported successfully rectifying over 200-meter boxes in Port Moresby ...



Design and engineering for the primary, secondary, civil, and ancillary system. Procurement, manufacturing, factory testing, project management, site supervision, installation, inspection, punch ...



ADB provides the information contained in this project data sheet (PDS) solely as a resource for its users without any form of assurance.



The Rural On-Grid Extension Project in Papua New Guinea aims to provide electricity to approximately 2,500 vulnerable households, six schools, and four health clinics through the construction of new ...



The project will contribute to PNG's objective of connecting 70% of its population to electricity by 2030 and will help advance sector reforms by strengthening the financial management capacity and ...



The Rural On-Grid Extension Project in Papua New Guinea aims to provide electricity to approximately 2,500 vulnerable households, six schools, and four ...



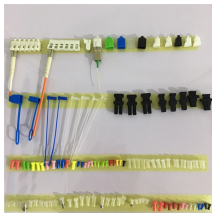
New Zealand invested \$6.7 million over the last six years into the project which aimed to connect at least 4000 households in the area to electricity. It was part of combined efforts with the ...



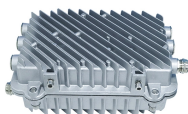
By introducing innovative, cost-effective, and durable technologies, we aim to bridge the infrastructure gap, empowering communities and contributing to the sustainable growth of Papua New Guinea's ...



Pay bills, check outages, and manage you power needs online. We deliver safe, reliable electricity while building a brighter, more connected future for all Papua New Guineans.



NEROP has identified the potential to expand PPL services in urban- and peri-urban areas and provide electricity in rural and remote communities with off-grid technologies, emphasizing ...



Papua New Guinea Box-type Substation Papua New Guinea Lighting Distribution Box Papua New Guinea Power Switchgear Papua New Guinea Underground Box Transformer Suitable for urban ...

## Contact Us

For more information, pricing, or custom data center solutions, please contact us:

Website: <https://yoahorroenergia.es>

Email: [hello@yoahorroenergia.es](mailto:hello@yoahorroenergia.es)

Phone: +233 54 318 7269

Address: Plot 28, Spintex Road, Accra, Greater Accra, Ghana

This document is for informational purposes only. Specifications subject to change without notice.

