

Photovoltaic bypass integrated module product image



Photovoltaic bypass integrated module product image



This research proposes small-area high-voltage (SAHiV) modules equipped with cross-tied bypass diodes at the module level. SAHiV modules are pseudo-high-voltage, low-current principle ...



The SM74611 device is a smart bypass diode used in photovoltaic applications. The SM74611 device serves the purpose of providing an alternate path for string current when parts of the panel are ...



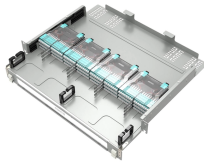
At BIPVco, we build our modules with Bypass Diodes embedded within the cell area of the module rather than within the junction box as with silicon crystalline modules.



Here we propose a cell architecture featuring integrated reverse conductivity to address this challenge. We derive the design principles by drawing inspiration from bypass diodes, and ...



Thin-film, tandem-junction, amorphous silicon (a-Si) photovoltaic modules were constructed in which a part of the a-Si alloy cell material is used to form bypass protection diodes.



Connect the photovoltaic battery emulate power to V_{b+} and V_{b-} , regardless of the polar. If connect the pos. of emulate power to V_{b+} and the neg. of emulate power to V_{b-} to simulate a solar panel in ...



The bypass diodes are integrated into the junction box parallel to the strings in order to optimize the generated power of the PV module, even when part of the module is not working due to shadow ...



In accordance with embodiments, bypass diodes are integrated within the monolithic interconnects of the thin film photovoltaic modules. Furthermore, such integration structures may...



We demonstrate monolithic integration of high-voltage photovoltaic array and Schottky bypass diodes on the same bulk CMOS chip for the first time. Post localized substrate removal process was utilized to ...

Contact Us

For more information, pricing, or custom data center solutions, please contact us:

Website: <https://yoahorroenergia.es>

Email: hello@yoahorroenergia.es

Phone: +233 54 318 7269

Address: Plot 28, Spintex Road, Accra, Greater Accra, Ghana

This document is for informational purposes only. Specifications subject to change without notice.

