

# Power System Relay Protection Iset1



## Power System Relay Protection Iset1



The course provides basic guidelines for relay application and settings calculation. It also reviews basic power system concepts and describes instrument transformers.



(2) (protective relay system) A circuit from a relay system that exercises direct or indirect control of power apparatus such as tripping or closing of a power circuit breaker.



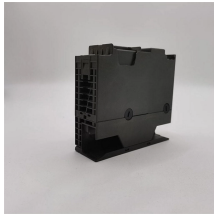
Part 1 will discuss the principles and basics of protection system coordination, the developments in the coordination programs and present day multifunctional numerical devices used in distribution and ...



Let's have a discussion on basic concept of protection system in power system and coordination of protection relays. In the picture the basic connection of protection relay has been shown.



To accomplish these goals, we must examine all possible types of fault or abnormal conditions which may occur in the power system. We must further examine the possibility that ...



(2) (protective relay system) A circuit from a relay system that exercises direct or indirect control of power apparatus such as tripping or closing of a power circuit ...



Current is measured at several points and compared. Faults must be isolated as fast as possible. A collection of protection equipment providing a defined function. • Example from Strauss 4.4.2.



A number of bus protection schemes are presented; their adequacy, complexity, strengths, and limitations with respect to a variety of bus arrangements are discussed; specific application ...



Protective relays and devices have been developed over 100 years ago to provide “lastline” of defense for the electrical systems. They are intended to quickly identify a fault and isolate it so the balance of ...



In this study, an experimental setup was designed to monitor electrical quantities and protect the system in the event of a fault. The system design employed an energy analyzer to ...



Primary Protection Relays: These relays are the first line of defense and are installed to protect specific equipment or sections of the power system. They respond to faults within their designated zone.

## Contact Us

For more information, pricing, or custom data center solutions, please contact us:

Website: <https://yoahorroenergia.es>

Email: [hello@yoahorroenergia.es](mailto:hello@yoahorroenergia.es)

Phone: +233 54 318 7269

Address: Plot 28, Spintex Road, Accra, Greater Accra, Ghana

This document is for informational purposes only. Specifications subject to change without notice.

