

Price List for Low-Loss Optical Modules for Data Center Interconnection



Overview

This article compares typical cost ranges across speeds and transceiver types, explains why prices vary, and gives practical guidance for choosing the right optics for a given budget and performance requirement. Understanding Optical transceiver Pricing helps procurement, network planning, and total cost-of-ownership decisions. Ranging from low-data rate to 800 GB, our transceivers cover types of SFP, SFP+, SFP28, SFP56, QSFP+, QSFP28, QSFP56, QSFP-DD, OSFP, GPON OLT transceivers. This report analyzes the impact of growing data traffic and the changing architecture of data centers on the market forecast for Ethernet optical transceivers with a focus on the high-speed modules used in data centers. It leverages extensive historical data on shipments of Ethernet modules. The Marvell data center interconnect portfolio includes COLORZ®, COLORZ® 400 and COLORZ® 800 modules in multiple form factors to connect regional data centers. Marvell offers a portfolio of DCI modules designed to efficiently transmit data over regional fiber networks. Propel™ high-speed fiber optic platform delivers the capacity,

flexibility and simplified.

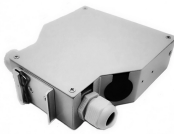
Price List for Low-Loss Optical Modules for Data Center Interconnect



It includes historical shipment data and forecasts for units, prices, and sales of these products to each of the three main market segments: Cloud data centers, Enterprise and Telecom networks.



See practical price ranges for 1G-100G optical transceivers, DAC/AOC options, and why cost varies by speed, reach and technology — buying tips included.



From low data rates to 800GB, we have compatible, energy-efficient modules tested with global standards. Get the quality you need for any application.



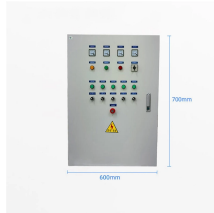
Search for and compare optical components from manufacturers around the world, or for custom jobs we'll match you with an industry expert service provider.



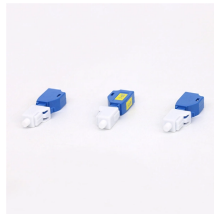
The high-density, modular design and 16-, 8-, 12- and 24-fiber optic ultra-low loss connectivity make it ideal for data center and enterprise networks. Engineered and supported by CommScope, it provides ...



Modular, pluggable line cards and optics to customize your solution. Combine service modules, amplifiers and ROADMs in a single chassis



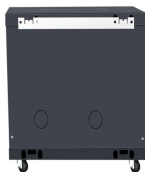
Marvell offers a portfolio of DCI modules designed to efficiently transmit data over regional fiber networks.



Get the highest quality, performance-leading optical transceivers for any network architecture. Find the transceiver model to fit your network.



Our portfolio spans data rates from 1G to 400G, including SFP, SFP+, SFP28, QSFP+, QSFP28, QSFP-DD, and OSFP modules, designed for both single-mode and multi-mode fiber environments.



Get a quote for the specific products and quantities you need. Consult with your Skyworks" sales representative or distributor to find the best solution for your design. Learn more about our purchase ...

Contact Us

For more information, pricing, or custom data center solutions, please contact us:

Website: <https://yoahorroenergia.es>

Email: hello@yoahorroenergia.es

Phone: +233 54 318 7269

Address: Plot 28, Spintex Road, Accra, Greater Accra, Ghana

This document is for informational purposes only. Specifications subject to change without notice.

