

Price of Electrical Specifications for Primary Distribution Boxes



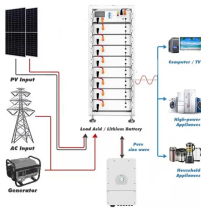
Price of Electrical Specifications for Primary Distribution Boxes



From residential 100-amp panels to massive 600 amp main distribution panels in commercial facilities, this comprehensive guide will help you understand distribution board types, ...



When budgeting for electrical boxes, most buyers look at upfront cost ranges based on box type, material, and installation complexity. The price drivers include box size, material, finish, and labor ...



Electrical characteristics (HP, KVA, voltage, phase) of actual equipment furnished under other Sections being different from that shown on the electrical drawings.



Explore the complete breakdown of distribution box costs, including safety features, scalability options, and operational benefits. Learn how to maximize your investment in electrical distribution systems.



What Drives Price Several drivers determine the final cost beyond a base panel box price. The main factors include panel amperage, number of spaces for breakers, main disconnect type, and ...



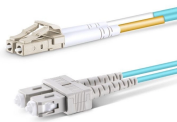
Use of BAHRA breakers of high specification with high interrupting capacity secures the highest safety standards. It also increases durability and helps the product withstand electrical shocks.



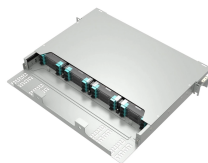
The distribution box is an important component of the power system and has profound applications in commercial, industrial, and other fields. The main job of a distribution box is to ensure the safe ...



Prices matching conventional meter boxes. Shockproof. Non-fusing. Shockproof and rustproof. Standard design made as per the electrical requirements to suit conventional power distribution systems ...



Eaton's Pow-R-Line 3e distribution panelboards provide higher interrupting ratings for selective coordination purposes and electric power distribution with integrated breakers, metering and surge ...



Prices for a new electrical box vary by type, size, and labor, with main panels typically driving most of the expense. Key cost drivers include panel amperage, number of circuits, location, ...



This document provides pricing information for distribution boards, plug and socket boxes, and single and three phase AC boxes from Anchor Electricals. It lists ...



Typical cost ranges for replacing a distribution box or service panel in the United States vary widely based on panel size, amperage, labor, and whether a full service upgrade is needed.

Contact Us

For more information, pricing, or custom data center solutions, please contact us:

Website: <https://yoahorroenergia.es>

Email: hello@yoahorroenergia.es

Phone: +233 54 318 7269

Address: Plot 28, Spintex Road, Accra, Greater Accra, Ghana

This document is for informational purposes only. Specifications subject to change without notice.

