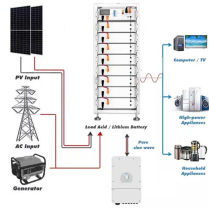


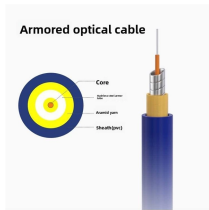
## Primary distribution box refers to the power distribution room



## Primary distribution box refers to the power distribution room



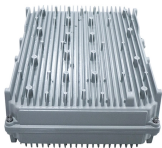
It is the first point of power distribution after the utility service entrance or the main transformer. Function: The MDB receives a high-voltage, high-amperage electrical supply and distributes it to several sub ...



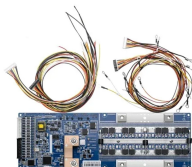
The primary role of the power distribution box is to provide a safe and organized way to manage electrical circuits. It acts as a protective enclosure that houses several key components, ...



A typical primary distribution substation would include air-insulated outdoor-type high-voltage side (HV) and a metal-enclosed air-insulated indoor-type medium-voltage switchgear (MV).



Generally, first level distribution does not allow direct use of electrical equipment, and second level distribution will be by power equipment because it is three-phase electricity, while third ...



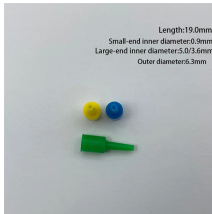
Also called a service panel, breaker panel, or load center, it's the spot where power from your utility company first enters your home. This panel's main job is to distribute electricity to all the ...



The primary distribution box refers to the main distribution box, typically located in the distribution room. These boxes feature bottom entry and exit cables, front-opening doors, and main ...



Primary distribution systems consist of feeders that deliver power from distribution substations to distribution transformers. A feeder usually begins with a feeder breaker at the ...



Primary distribution box: three-phase power supply, ground wire and zero wire are introduced from the transformer. Secondary distribution box: from the power line of primary distribution box to temporary ...



What is a Power Distribution Cabinet? A power distribution cabinet is a critical part of modern electrical systems. It helps protect, control, and distribute electricity safely in industrial, ...



Generally, first level distribution does not allow direct use of electrical equipment, and second level distribution will be by power equipment because it is three-phase electricity, while third ...



Primary: The main distribution panel, supplies power from the transformer. Secondary: Intermediate panel, routes power to buildings or zones. Tertiary: Final distribution point for equipment or ...

## Contact Us

For more information, pricing, or custom data center solutions, please contact us:

Website: <https://yoahorroenergia.es>

Email: [hello@yoahorroenergia.es](mailto:hello@yoahorroenergia.es)

Phone: +233 54 318 7269

Address: Plot 28, Spintex Road, Accra, Greater Accra, Ghana

This document is for informational purposes only. Specifications subject to change without notice.

